

FED. ROAD DIST. NO.	STATE	PROJECT NO.	FISCAL YEAR	SHEET NO.	TOTAL SHEETS
6	ARK.			1	5
STATE JOB NO. 8376					

**STATE OF ARKANSAS
STATE HIGHWAY COMMISSION**

INDEX OF SHEETS

SHEET NO.	DRWG. NO.	TITLE
1	7179	Title Sheet
2-4	7180, 7180-A, 7180-B	Details of 370' Swing Span
5	1896	Standard Barricade, Warning & Signs

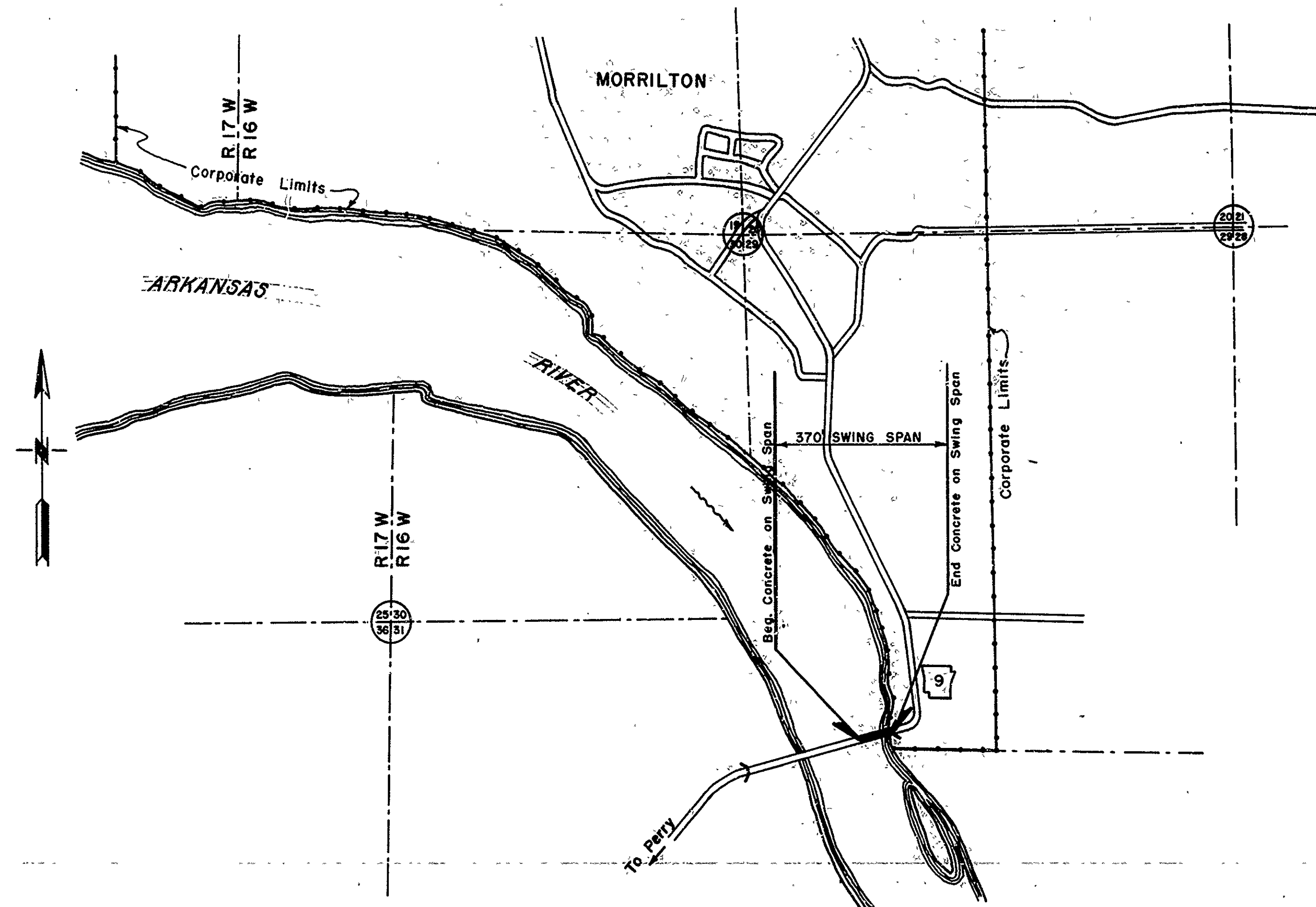
**PLAN OF PROPOSED BRIDGE
REFLOORING SWING SPAN
ARKANSAS RIVER
MORRILTON, ARK.
CONWAY COUNTY
ROUTE 9 SEC. 7
JOB NO 8376**

SPECIFICATIONS: ARKANSAS STATE HIGHWAY COMMISSION
STANDARD SPECIFICATIONS FOR ROAD AND BRIDGE CONSTRUCTION
ADOPTED MARCH 1, 1940 WITH THE SPECIAL PROVISIONS LISTED BELOW

PAMPHLETS

DIVISION	PART
I	
II	8-A, 8-B
IV	

No.	SPECIAL PROVISIONS TITLE	No. PAGES
2-1	Competency of Bidders	2
2-2	Equipment List Required	1
2-4	State License for Contractors	1
4-1	Final Clearing of Right of Way	1
8-2	Employment of Labor	1
9-5	Partial Payment	1
9-7	Common Carrier Rates	1
9-9	Federal Excise Tax on Freight Shipments	1
803-5	Revision of Article 803.21 - Bar Reinforcement (20,000 p.s.i. Design)	1
807-12	Concrete Filled Steel Grid Floor Slab	2
853-1	Machine Mixing	1
Job 8376	Removal of Existing Floor and Maintenance of Traffic	2



SUMMARY OF QUANTITIES

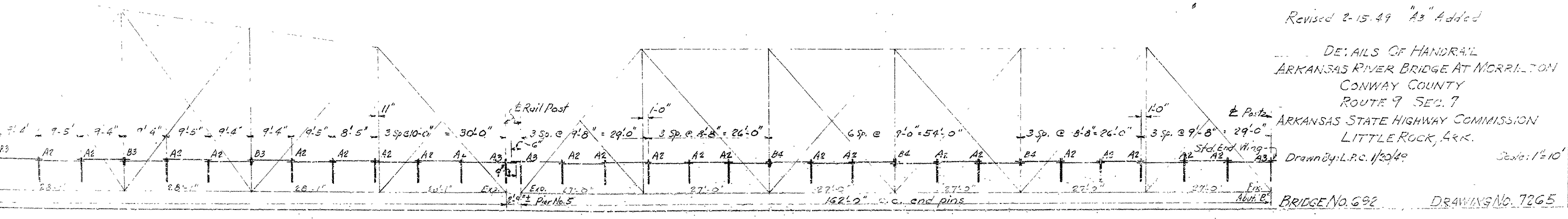
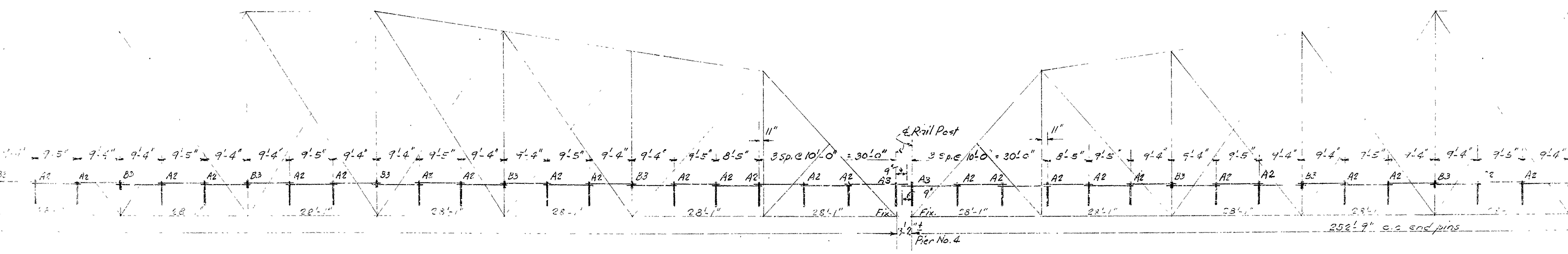
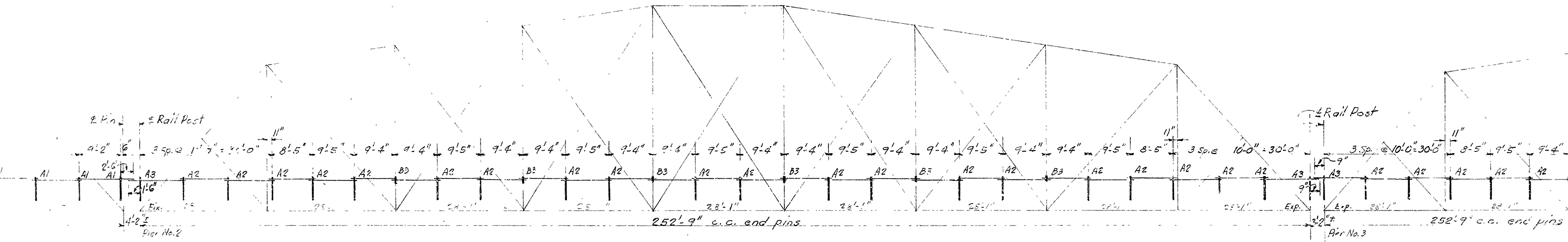
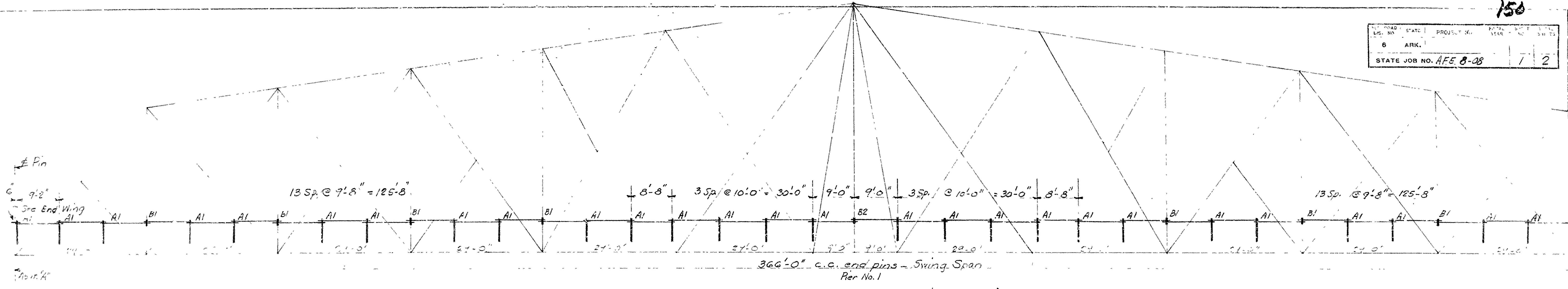
ITEM NO.	ITEM	QUANTITY	UNIT
807	Structural Steel in Truss Spans	35,600	Lb.
SP-807-12	Concrete Filled Steel Grid Floor Slab	6,518	Sq.Ft.
SP	Removal of Existing Floor & Maintenance of Traffic	100%	Comp.Item

LAYOUT
Scale: 1 in. = 1000 ft.

LENGTH OF PROJECT= 370 Feet = 0.070 Miles
 LENGTH OF BRIDGES= 370 Feet = 0.070 Miles
 LENGTH OF EMBANKMENT= 370 Feet = 0.070 Miles
 LENGTH OF JOB= 370 Feet = 0.070 Miles

RECOMMENDED FOR APPROVAL
 ACTING BRIDGE DESIGN ENGINEER
 RECOMMENDED FOR APPROVAL
 ACTING DISTRICT ENGINEER
 APPROVED
 ACTING CHIEF ENGINEER

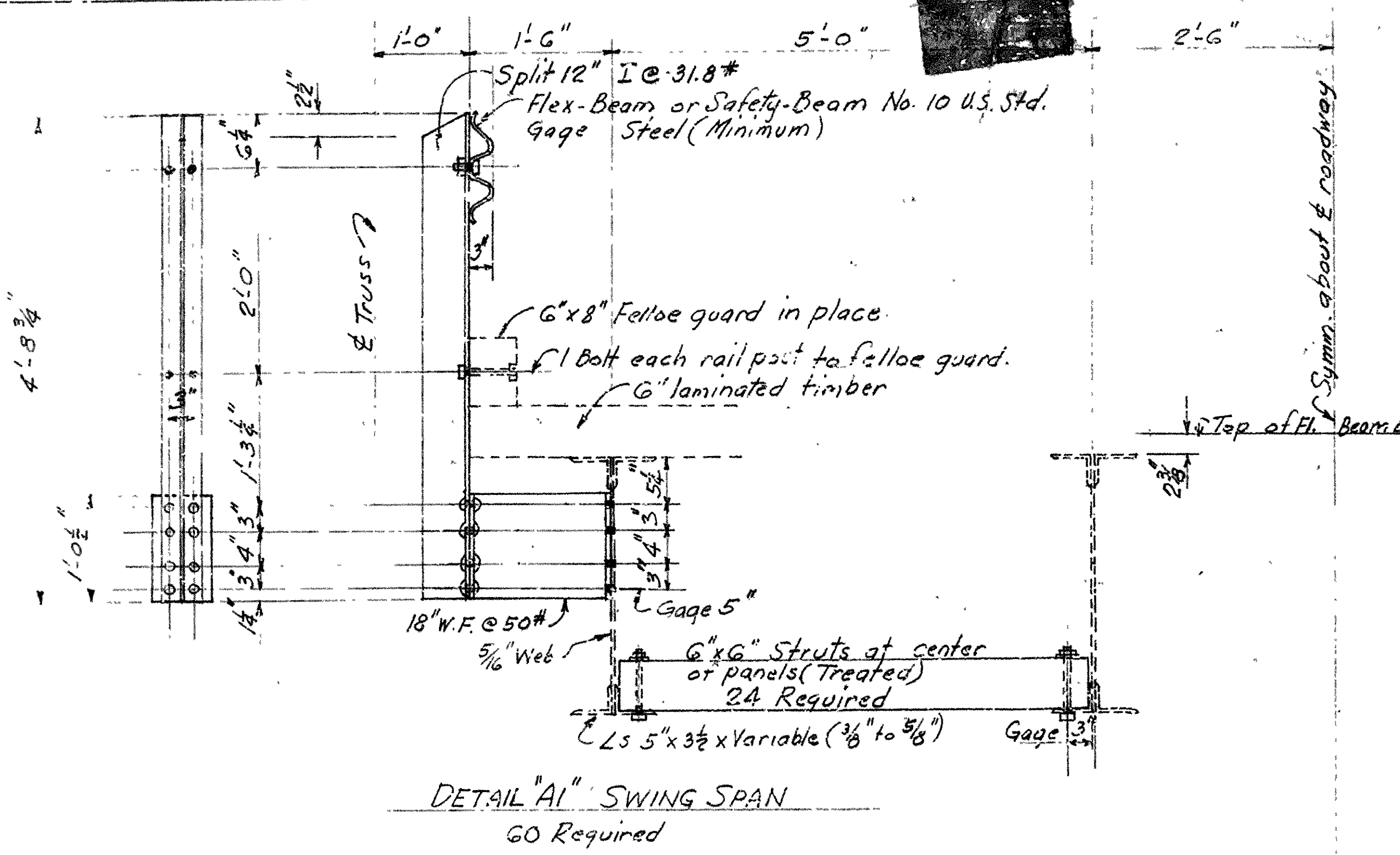
ROAD NO.	STATE	PROJECT NO.	SHEET NO.	TOTAL SHEETS
6	ARK.		1	2
STATE JOB NO. AFE 8-28				



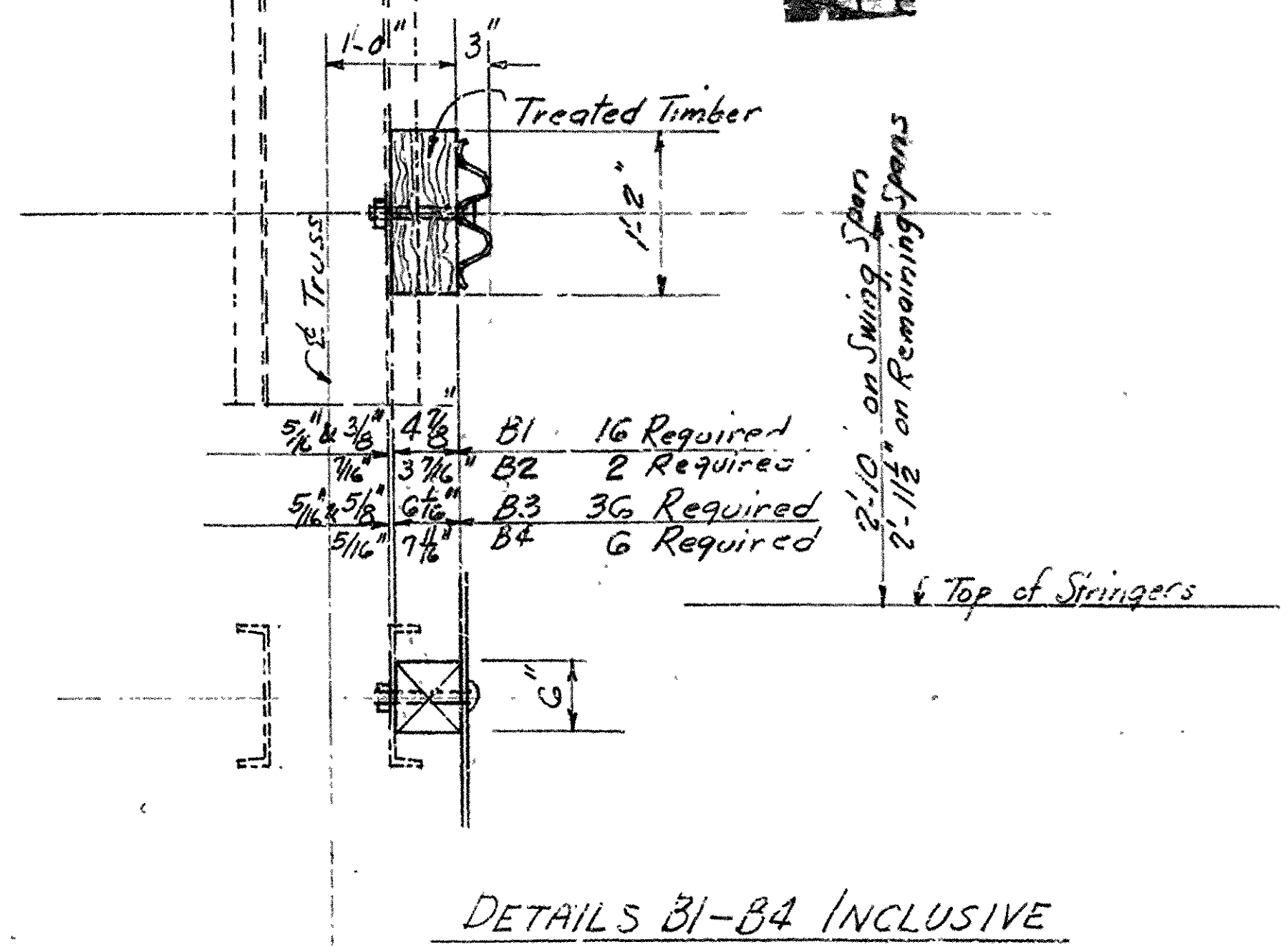
Revised 2-15-49 "A3" Added

DETAILS OF HANDRAIL
 ARKANSAS RIVER BRIDGE AT MORRILTON
 CONWAY COUNTY
 ROUTE 9 SEC. 7
 ARKANSAS STATE HIGHWAY COMMISSION
 LITTLE ROCK, ARK.
 Drawn by L.P.C. 1/30/49 Scale: 1"=10'
 BRIDGE No. 692 DRAWING No. 7265

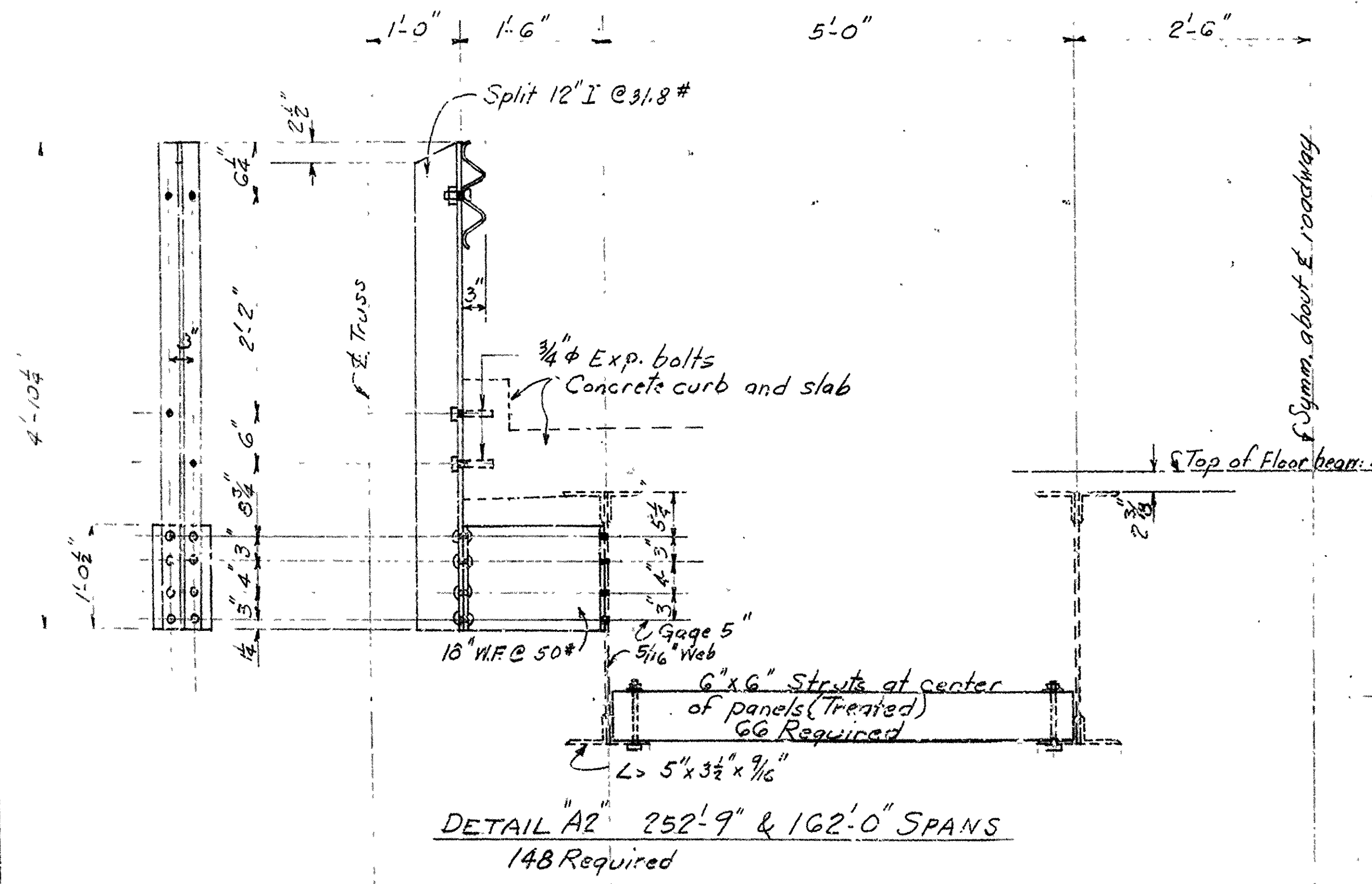
FED. ROAD DIST. NO.	STATE	PROJECT NO.	FISCAL YEAR	SHEET NO.	TOTAL SHEETS
6	ARK.			2	2
STATE JOB NO. A.F.E. 8-08					



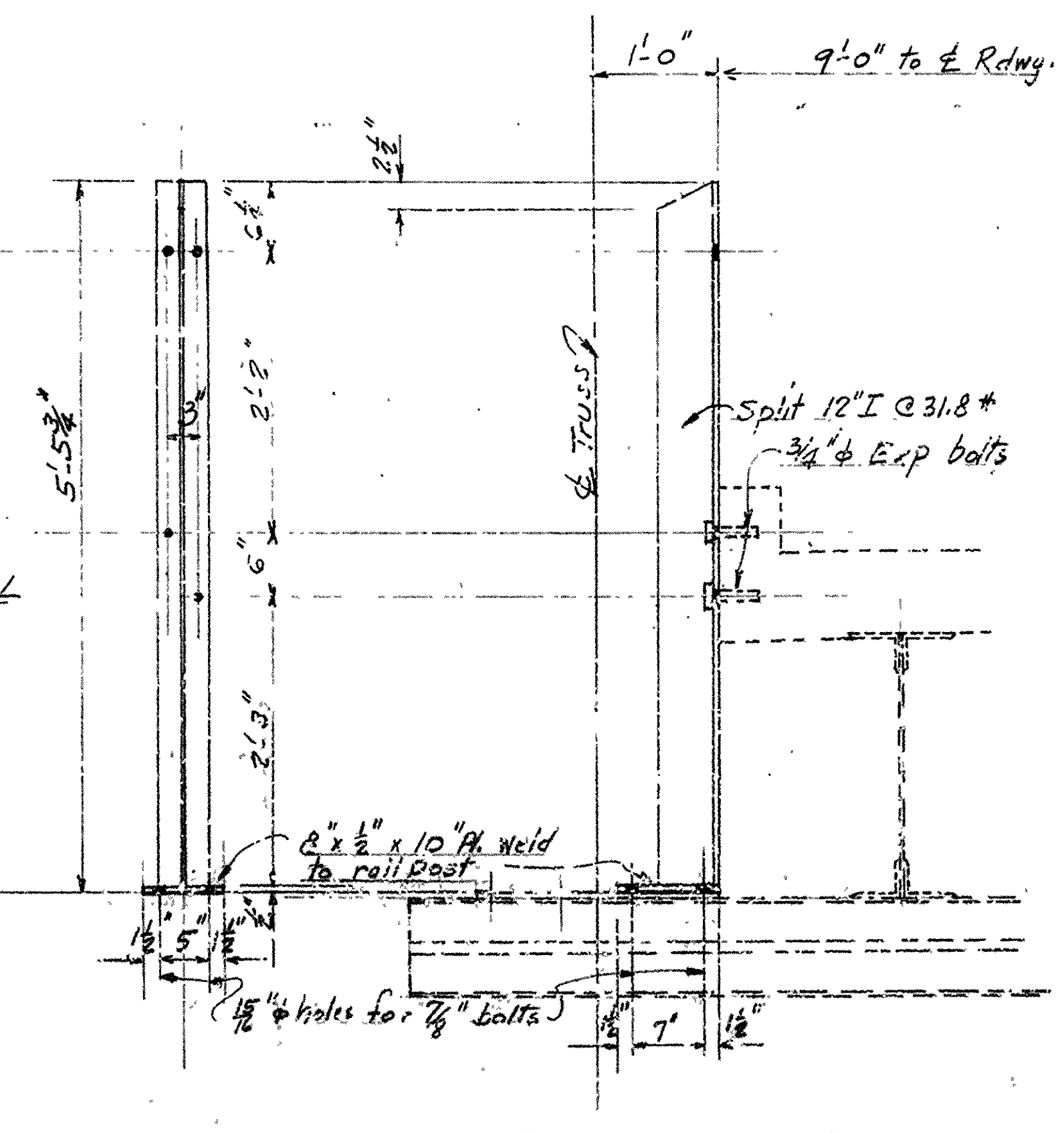
DETAIL "A1" SWING SPAN
60 Required



DETAILS B1-B4 INCLUSIVE



DETAIL "A2" 252'-9" & 162'-0" SPANS
148 Required



DETAIL "A3" 252'-9" & 162'-0" SPANS
16 Required

Open holes 1 3/16" except as noted

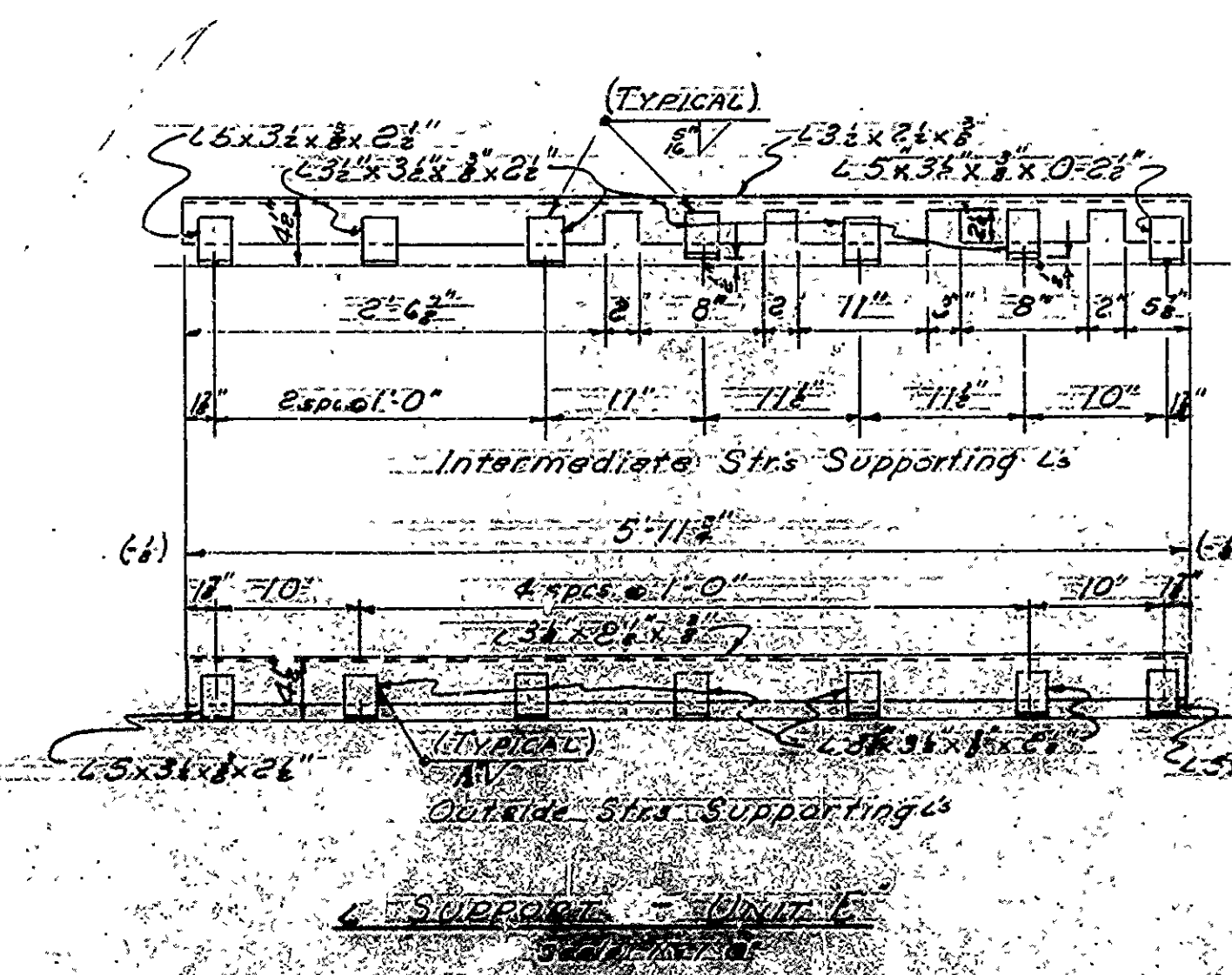
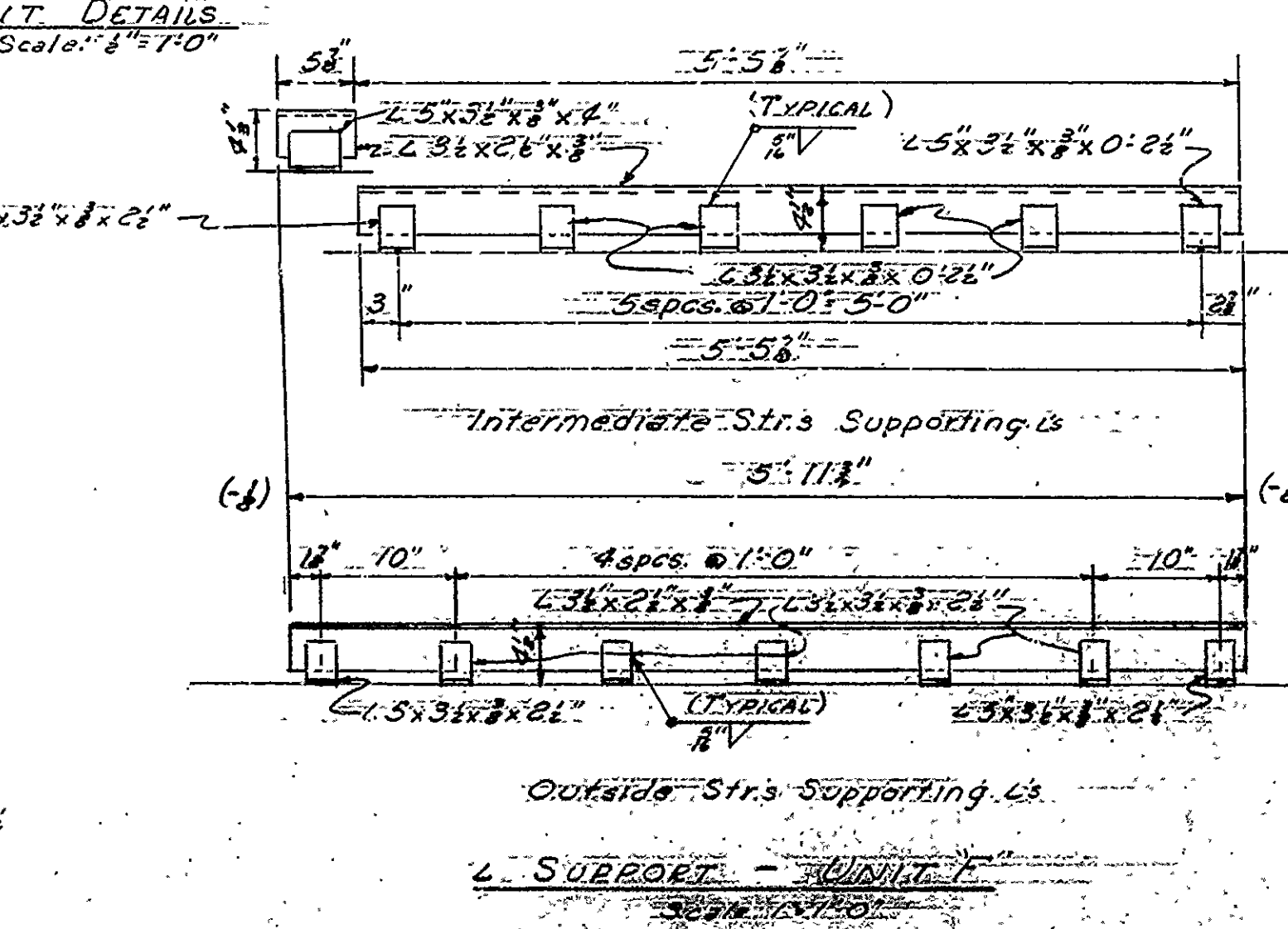
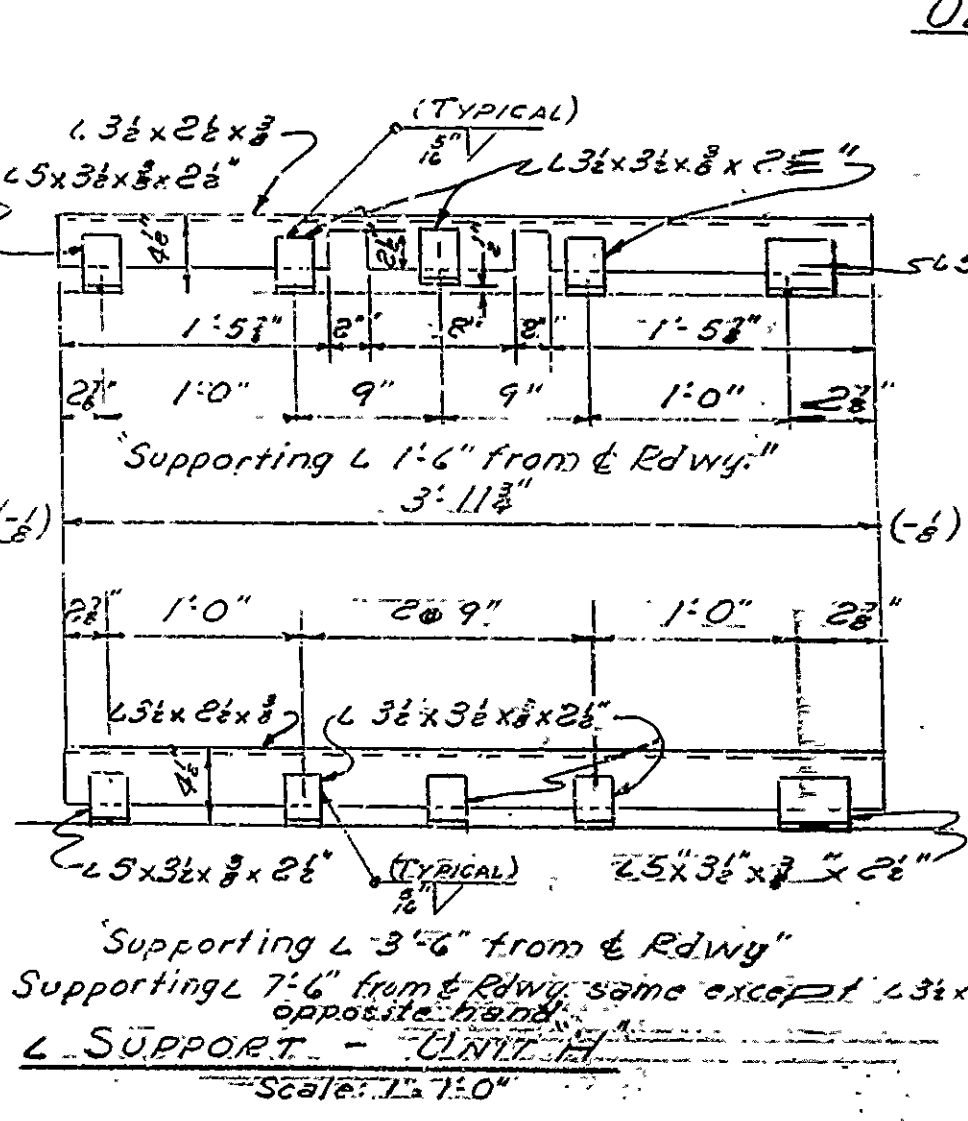
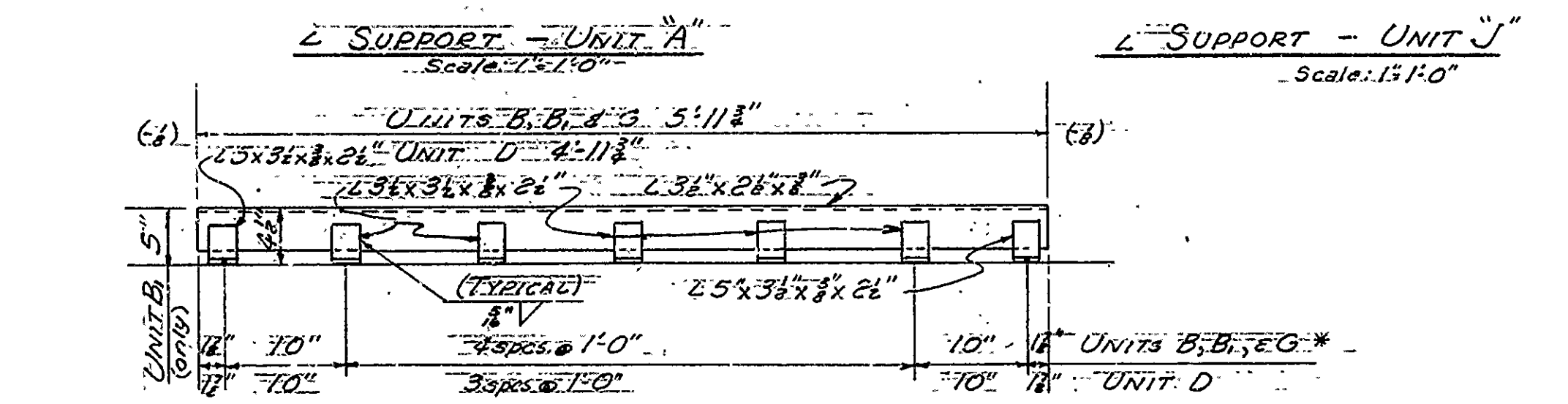
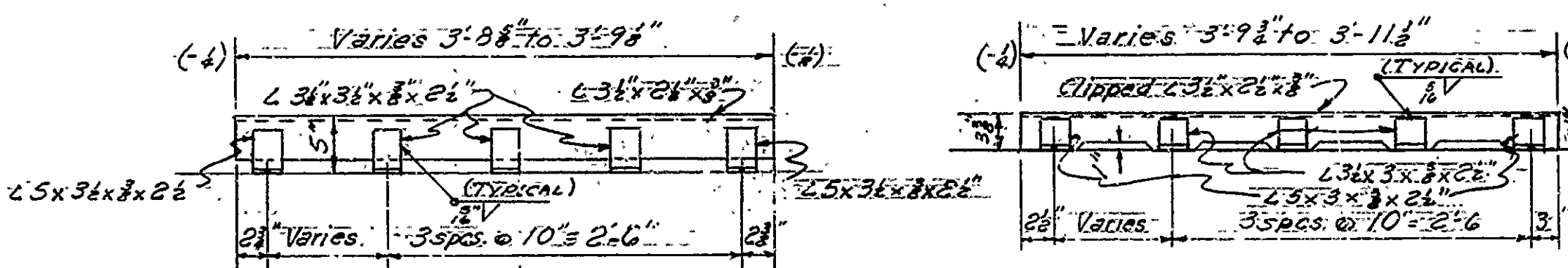
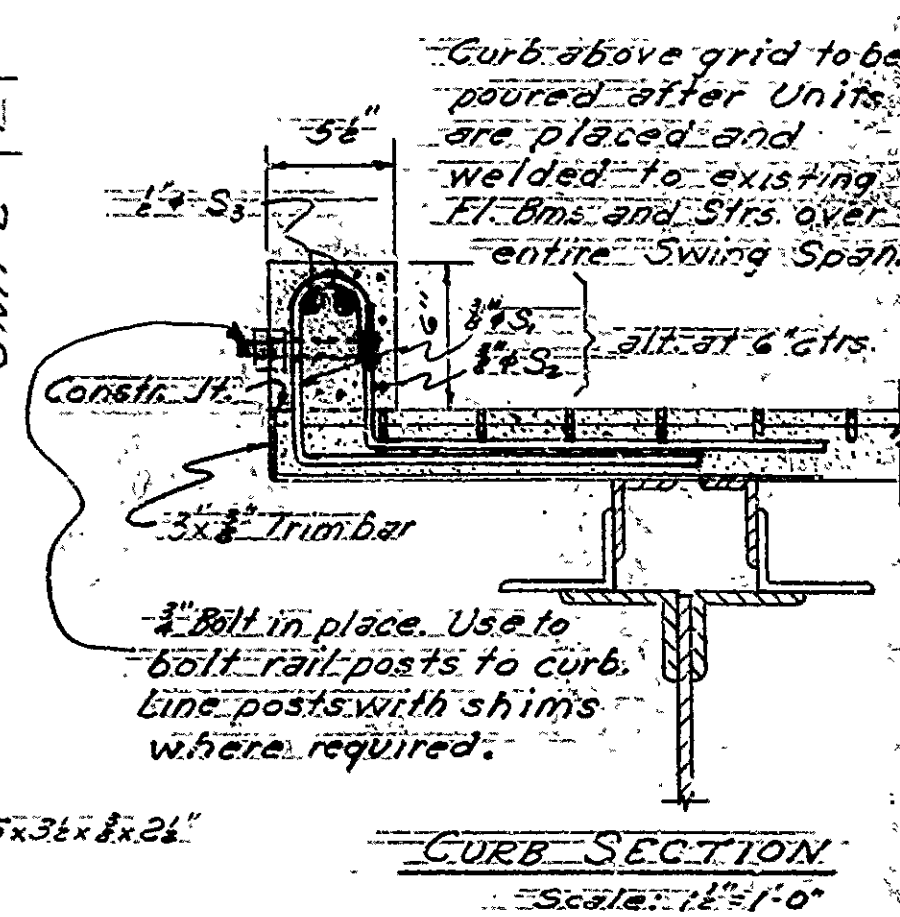
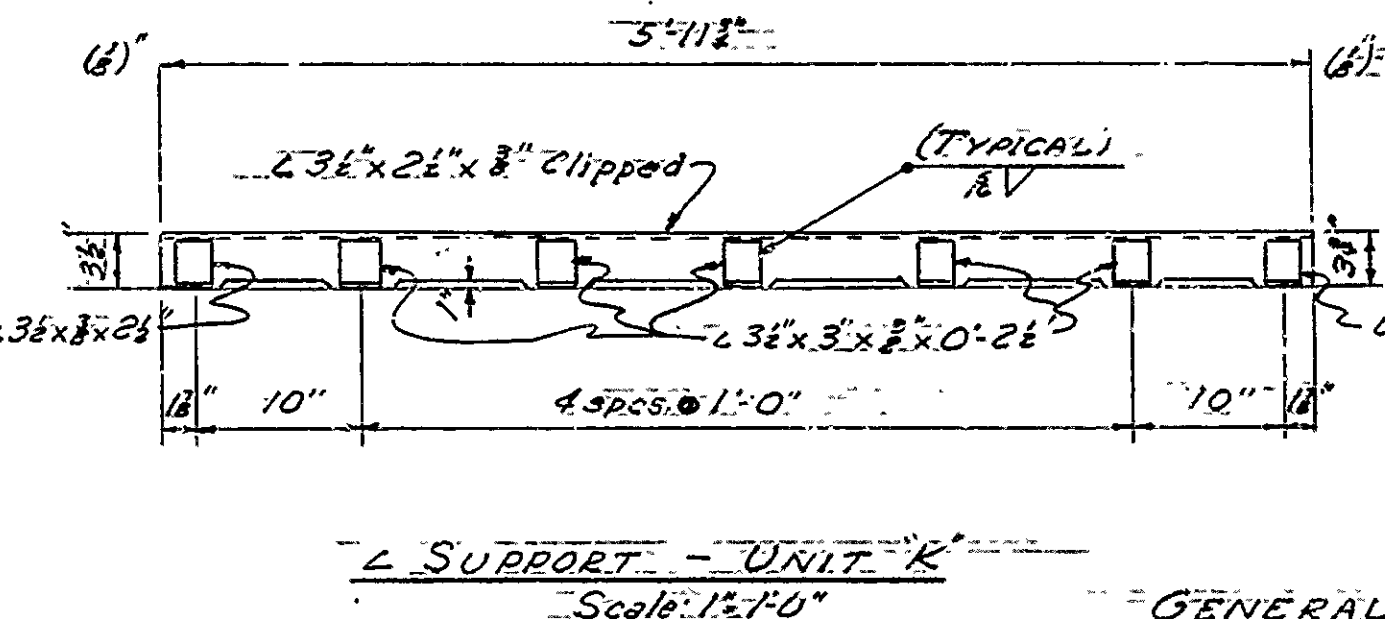
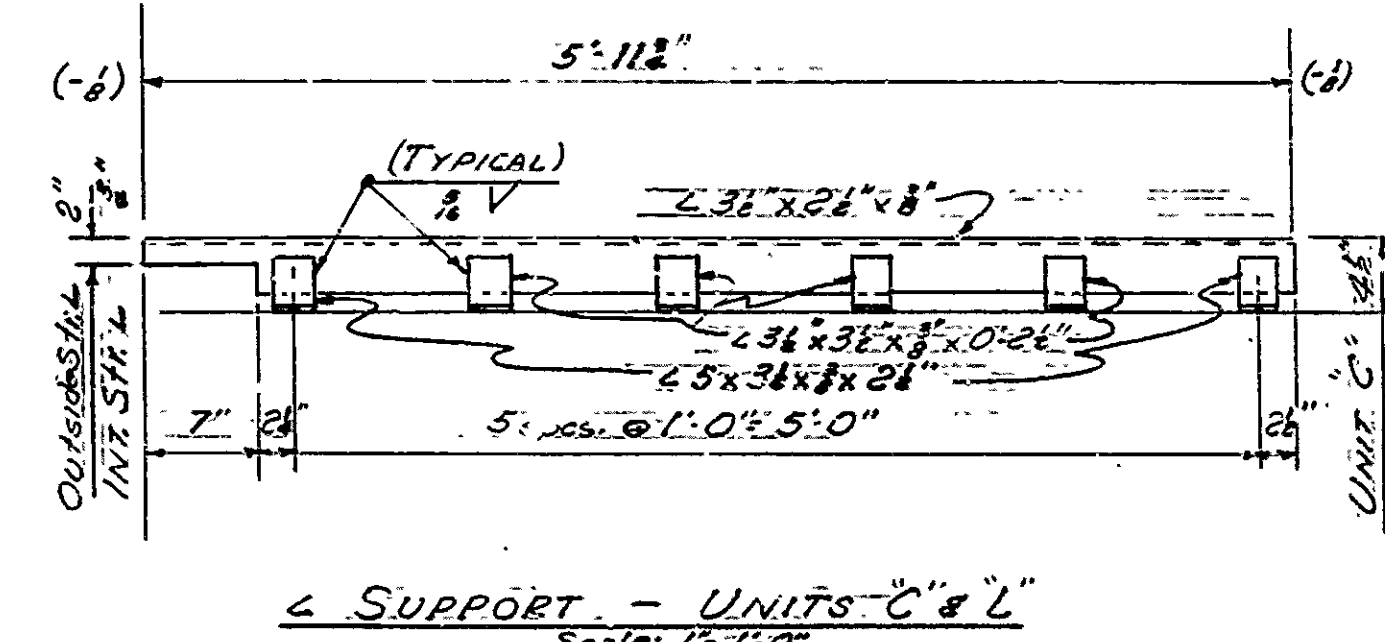
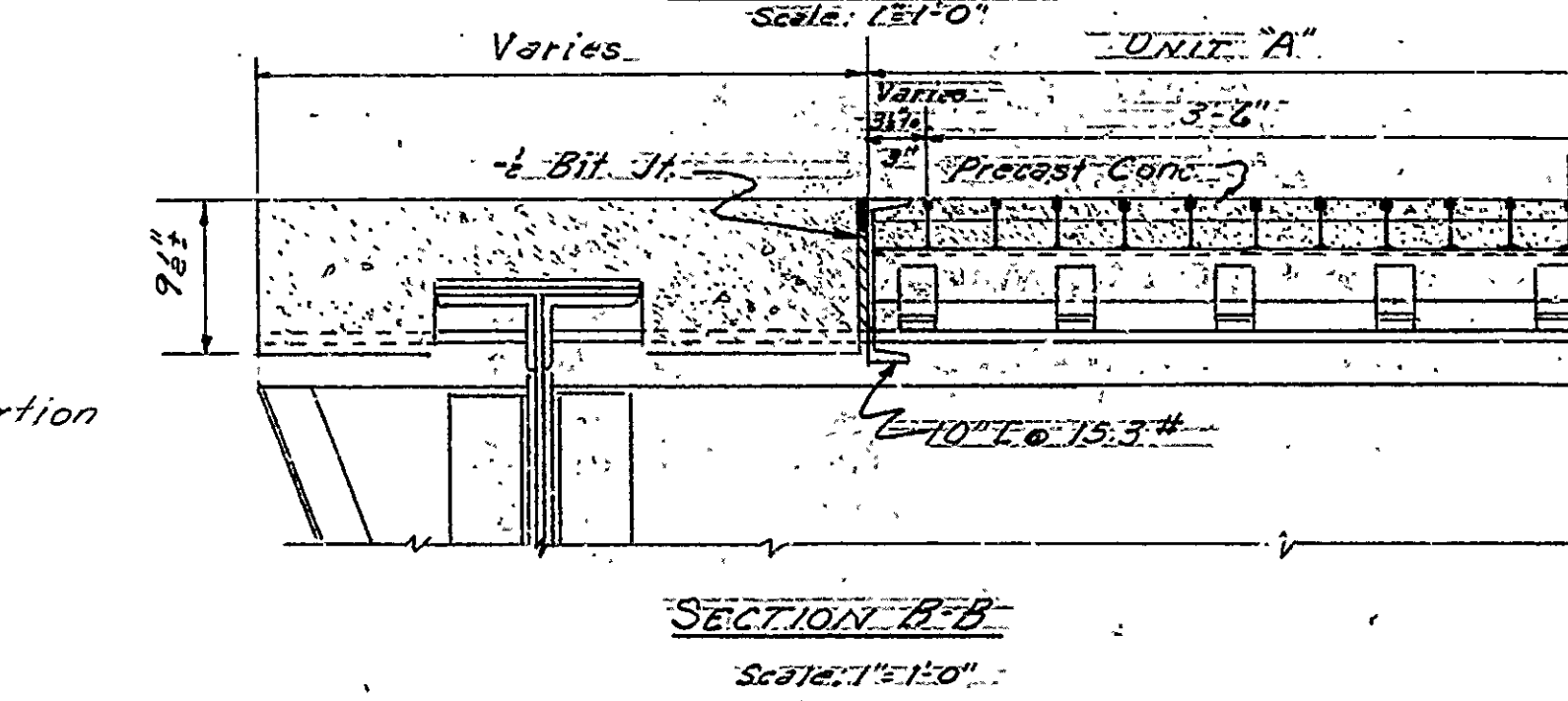
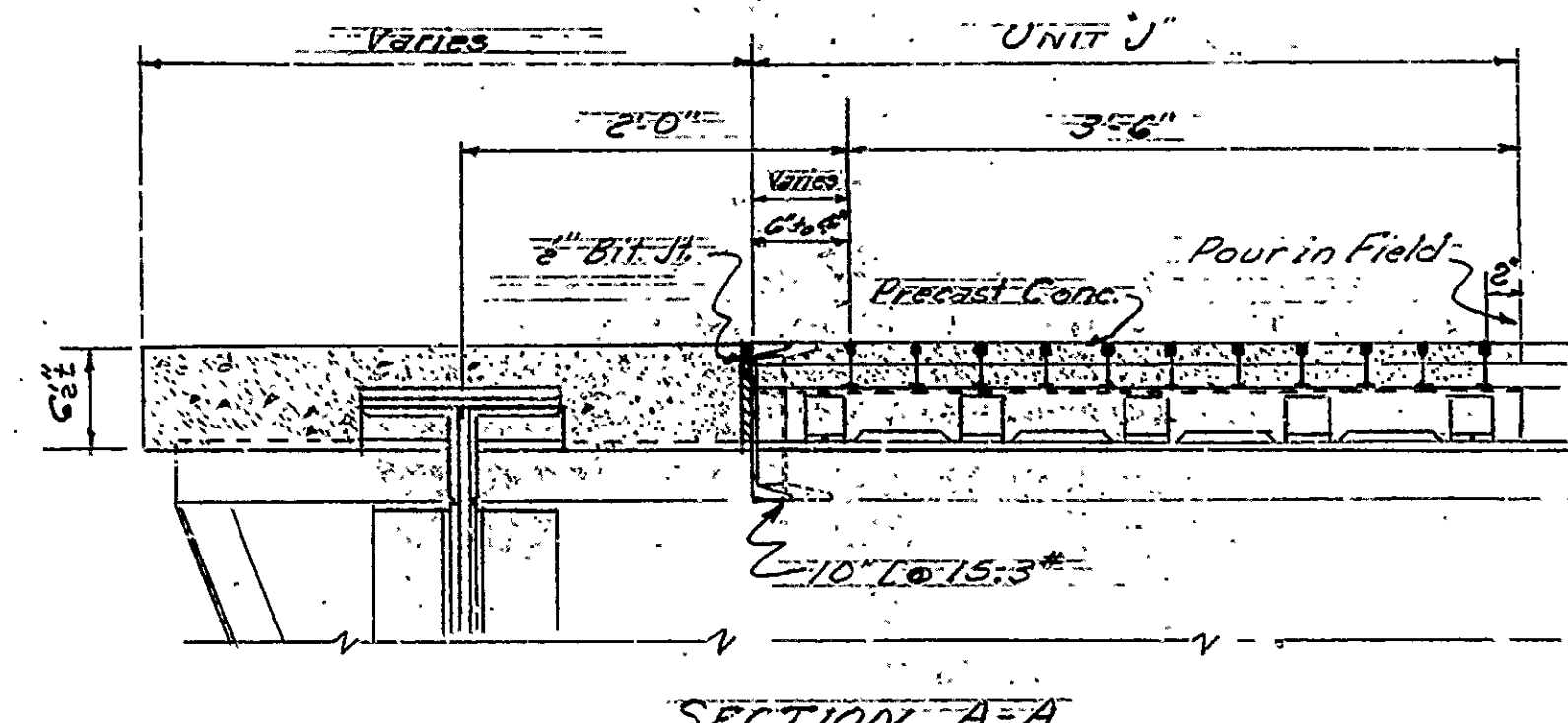
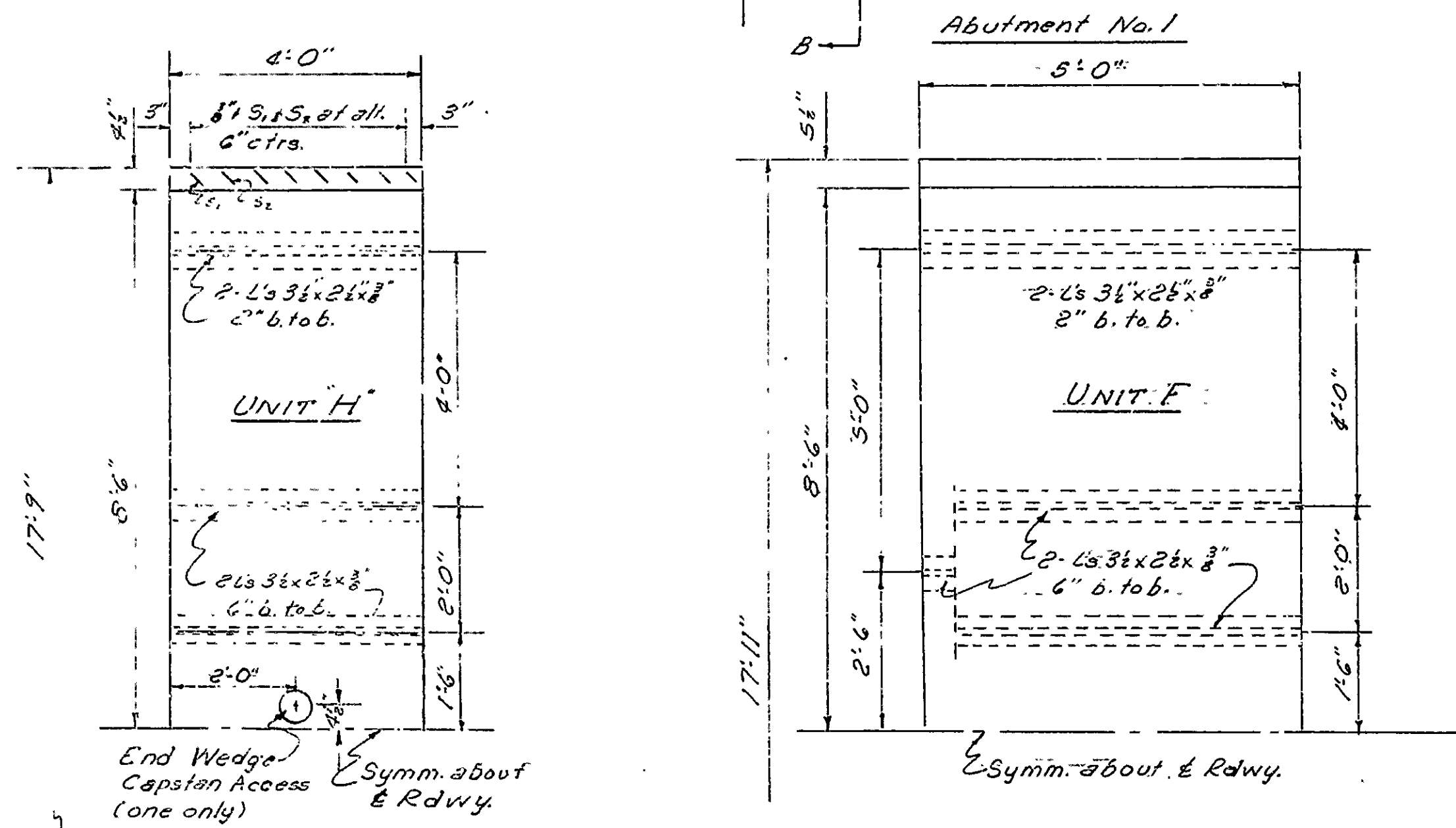
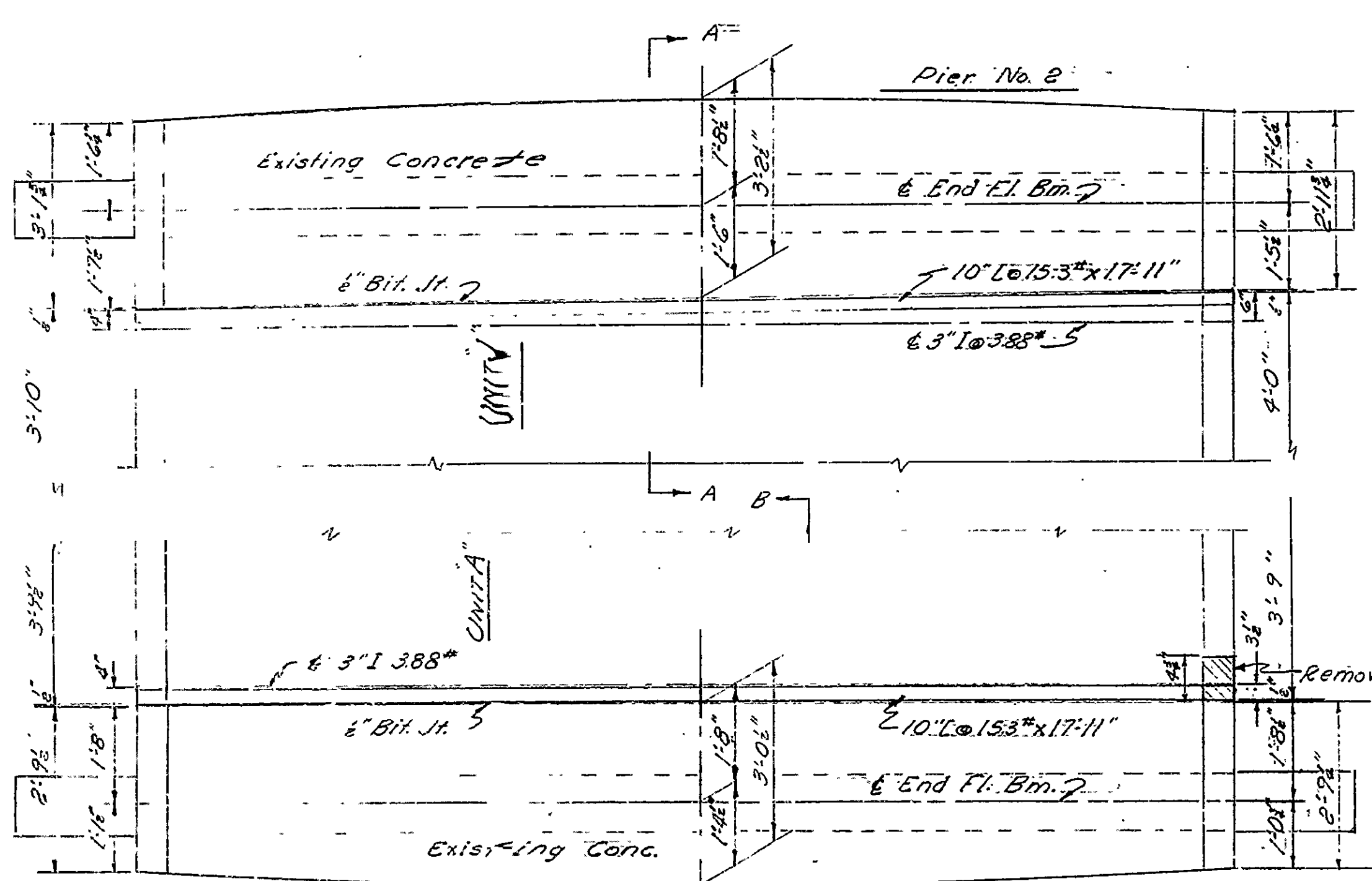
Revised 2-15-49 "A3" added.

DETAILS OF HANDRAIL
ARKANSAS RIVER BRIDGE AT MORRILTON
CONWAY COUNTY
ROUTE 9 SEC. 7
ARKANSAS STATE HIGHWAY COMMISSION
LITTLE ROCK, ARK.

Drawn By: L.P.C. 1/24/49 Scale: 1/4" = 1'-0"

BRIDGE NO. 632 DRAWING NO. 7266

FED. ROAD No.	STATE	FED. AID PROJECT	FISCAL YEAR	SHEET No.	TOTAL SHEETS
6	ARK.			3	5
JOB No.		8376			



GENERAL NOTES

All dimensions shown shall be verified in the field by the Contractor before starting construction.

All concrete to be Class "S" using light weight coarse aggregate and high early strength cement.

All bituminous joint filler, trim bars, end dams, end channels, reinforcing steel, form strips, capstan access (couplings and caps), lifting sleeves, drains, and concrete to be included in the price for Concrete Filled Steel Grid Floor Slab.

The bridge deck shall consist of a concrete filled grid floor of a design known by the trade name of I-Beam Lok or an equivalent. Thickness of the steel grid to be 3/16" and I-Beams of the grid floor to be welded to the supporting angles in accordance with sketches for "Typical Field Welding" as shown on Drawg. 7180.

Concrete shall be placed in the grid, with the exception of the 4' section between units, before units are set in place on the existing bridge floor beams and stringers. Units are first to be set in place and fastened down by use of the temporary end fasteners and later welded to the existing floor beams and stringers as shown. Supporting angles shall be shimmed by use of plates to give a straight crown and bearing at each clip angle. The 4' section between units is then poured. This 4' section is protected from traffic by bridging which shall not be removed for a period of less than two days.

Existing floor shall be removed and units placed starting with Unit "H" at the center and working in both directions toward the ends of the swing span. The grade of the grid floor shall match the existing grade of the concrete aprons at each end of the swing span. The variations in elevations shall be made up in the end panels of the swing span. The operation of removing existing deck and fastening of the precast units with temporary fasteners shall be done between the hours of Midnight and 6:00 A.M. while traffic is halted. These operations must be completed and the deck safe for traffic at the end of this time. The actual welding of the units to the floor beams and stringers shall be done during daylight hours and under traffic.

All welding is to be by the electric arc process in accordance with the current specifications for Electric Welded Highway and Railway Bridges of the American Welding Society.

Shop Paint: All structural steel and steel grid, except surfaces in contact with concrete, shall be painted one coat of red lead and raw linseed oil before shipment.

Field Paint: 1st coat white lead paint tinted with lamp black; 2nd coat aluminum paint.

These drawings show general features only. Shop drawings shall be made in compliance with specifications and shall be submitted and approval secured before fabrication is begun.

For additional details see Drawgs. 7180 & 7180-B.

Specifications: Arkansas State Highway Commission Standard Specifications for Road and Bridge Construction, adopted March 1, 1940.

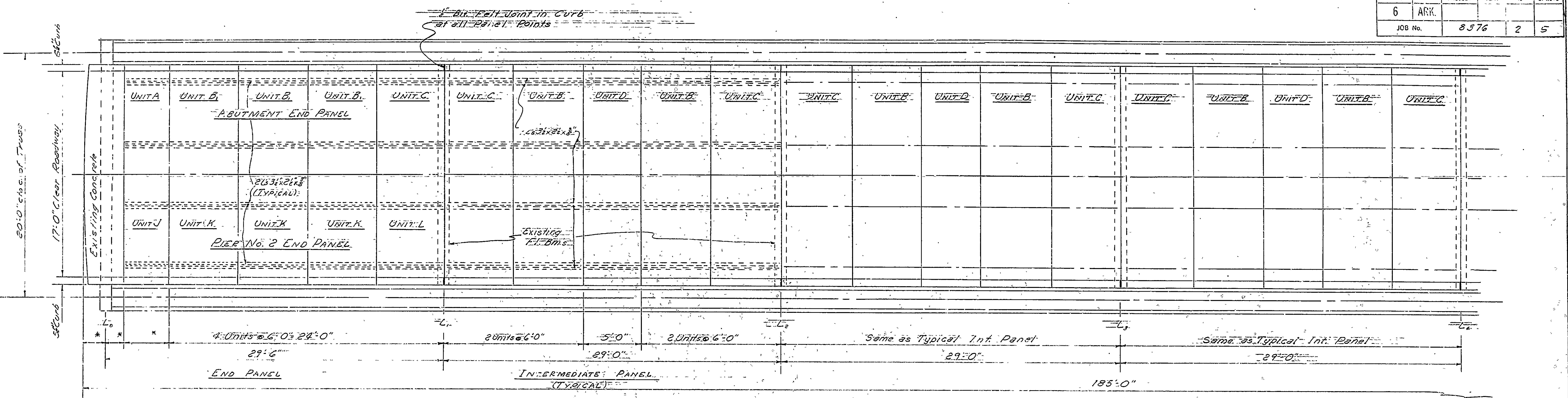
MARK	SIZE	NUMBER	LENGTH	BENDING DIAGRAM
S ₁	3/4"	732	24 1/2"	
S ₂	1/2"	730	22 1/2"	
S ₃	1/2"	8	27 1/2"	
S ₄	1/2"	32	28 1/2"	
S ₅	1/2"	8	23 1/2"	

Dimensions c/c to c/c of bars.

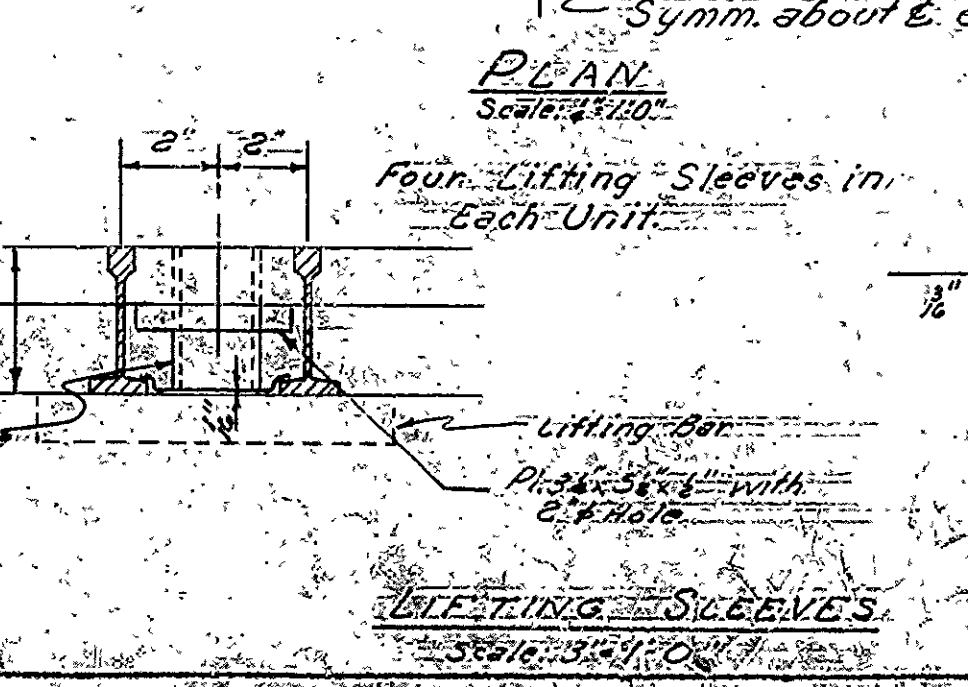
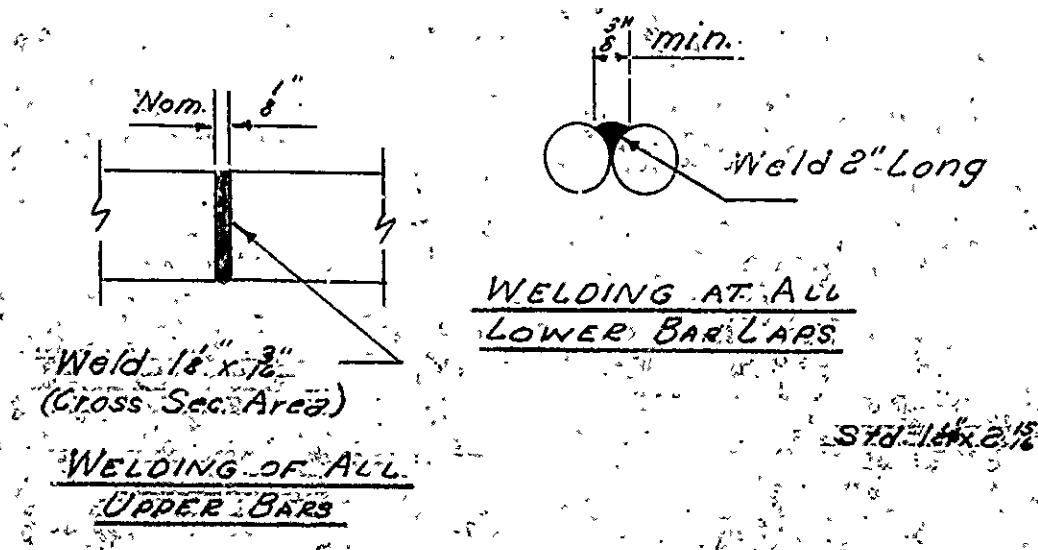
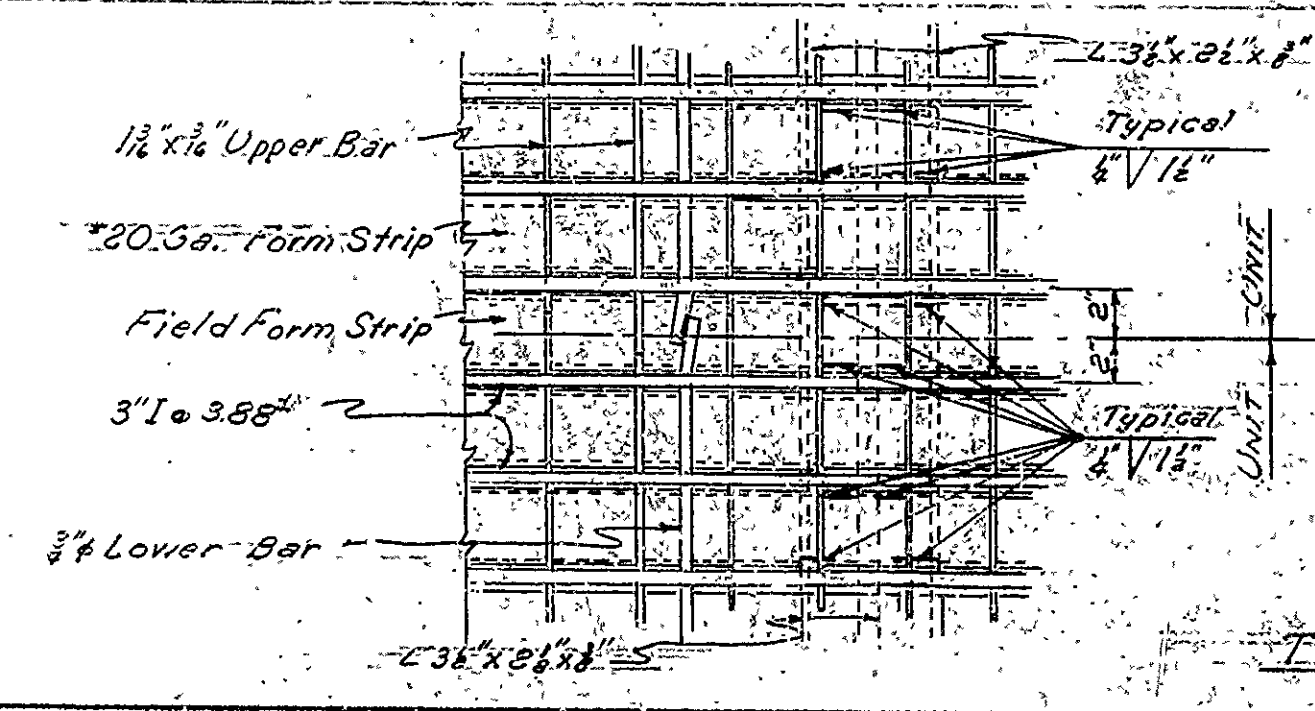
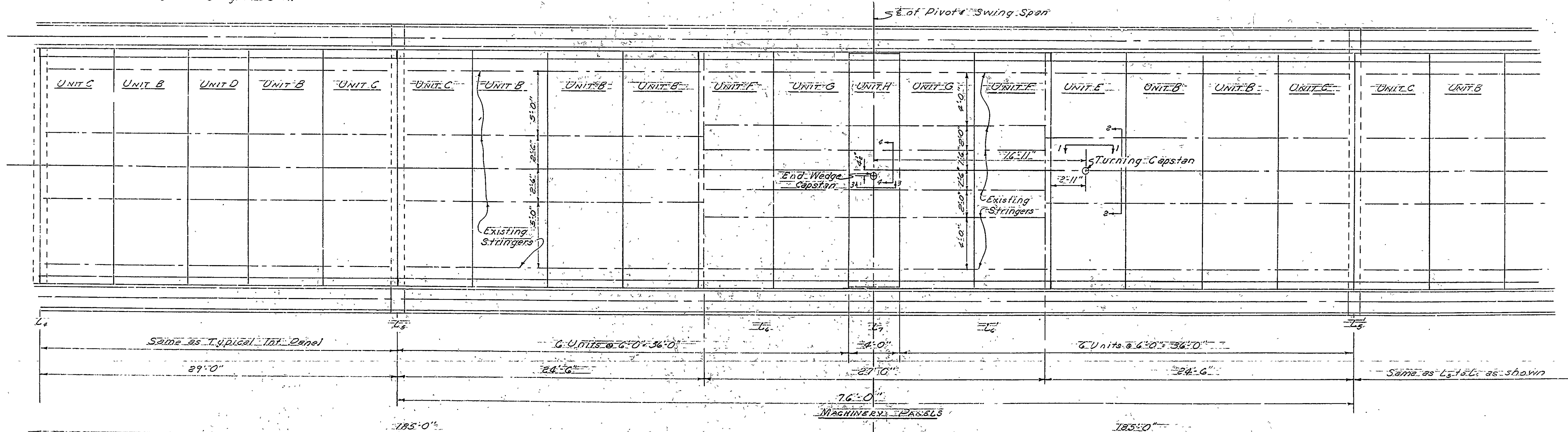
DETAILS OF REFLOORING SWING SPAN
ARKANSAS RIVER-MORRILTON
CONWAY COUNTY
 ROUTE 9 SEC. 7
ARKANSAS STATE HIGHWAY COMMISSION
 LITTLE ROCK, ARK.
 Drawn By: F.B.B. Date: 1-25-55
 Traced By: Date: 1-25-55
 Checked By: Date: 1-25-55
 BRIDGE NO. 692 DRAWING NO. 7180-A

L.P. Carlson
 Bridge Design Engineer

FED. ROAD No.	STATE	FED. AID PROJECT	FISCAL YEAR	SHEET No.	TOTAL SHEETS
6	ARK.			2	5
JOB No.		8376			



* For omitted dimension see Drwg. 7180-A.

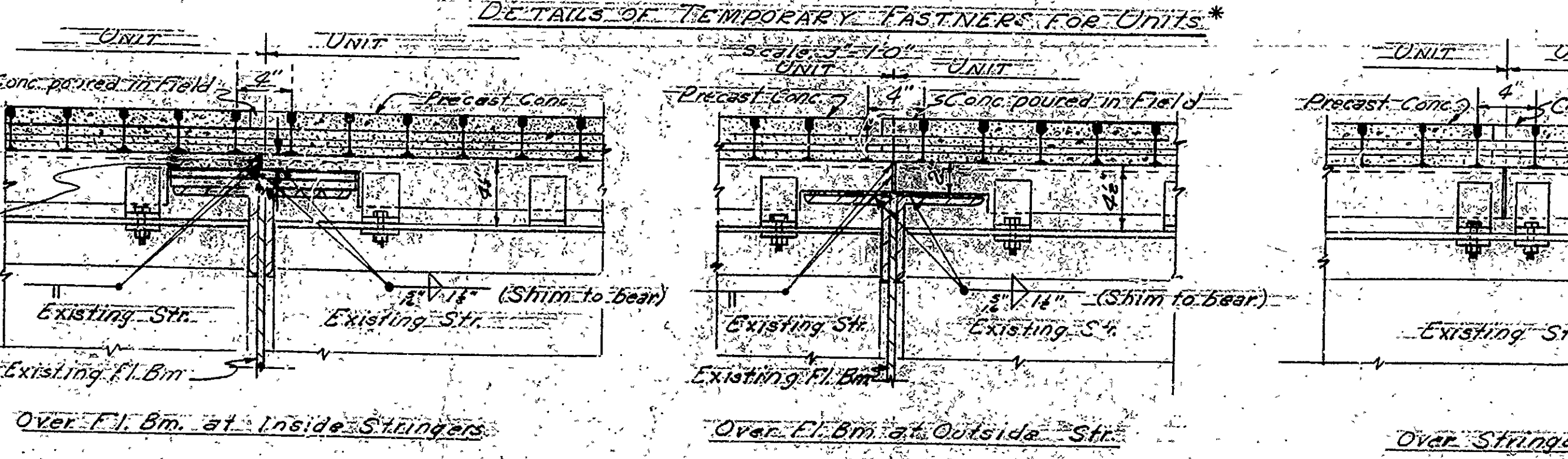
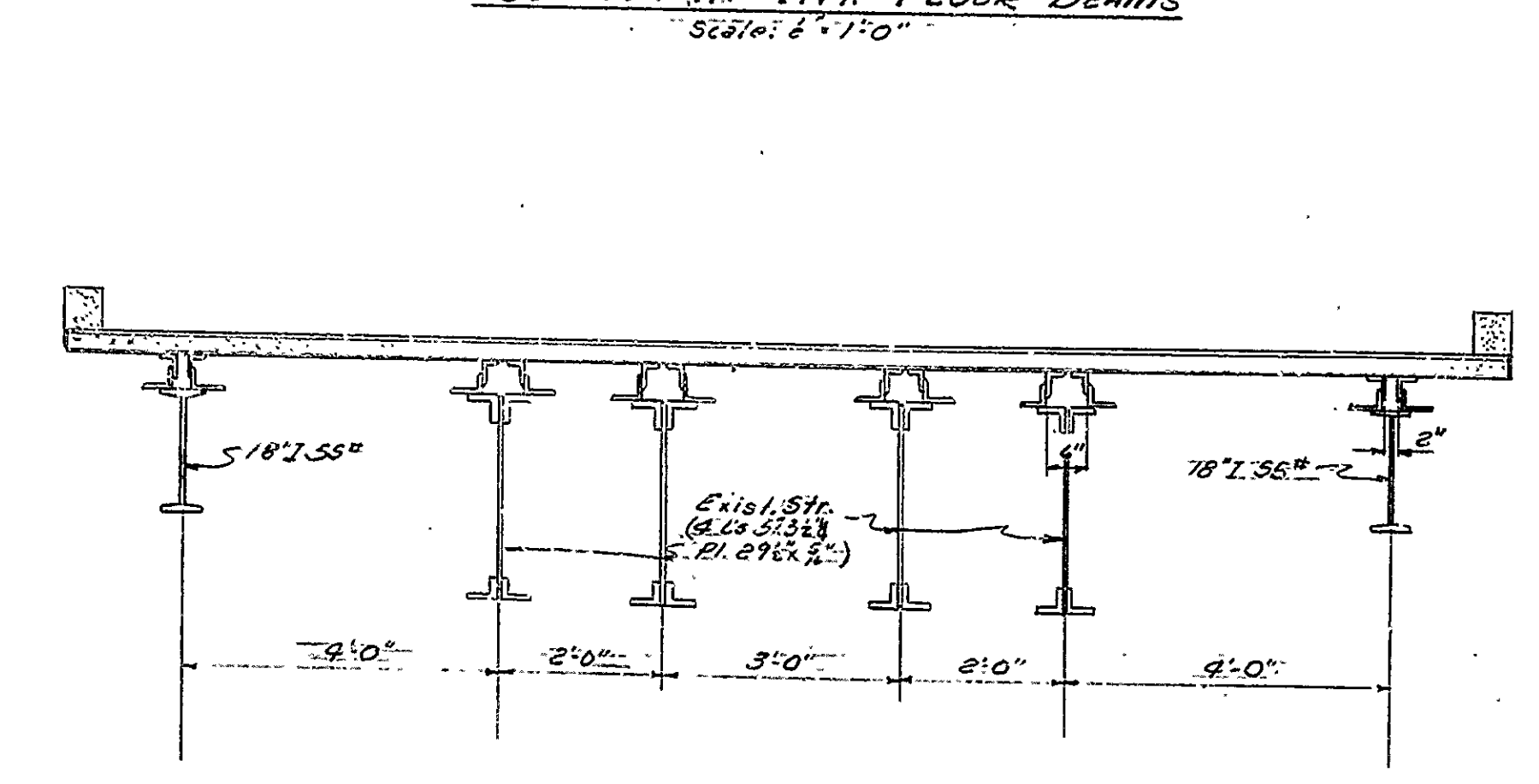
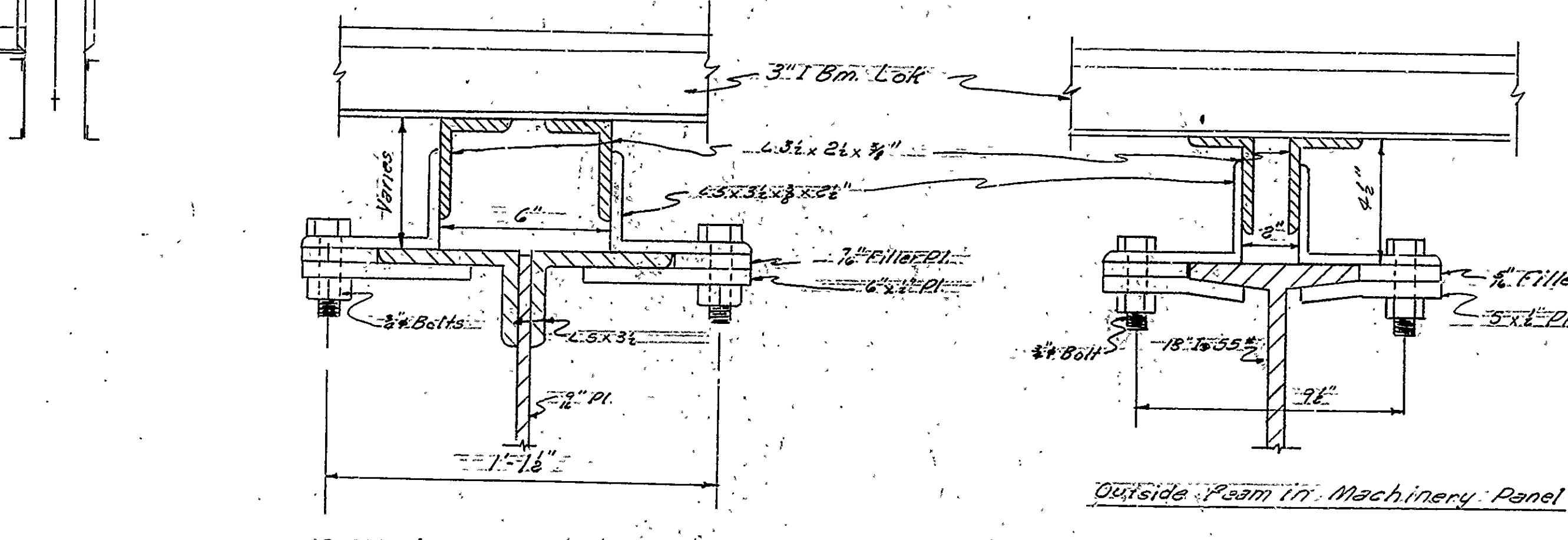
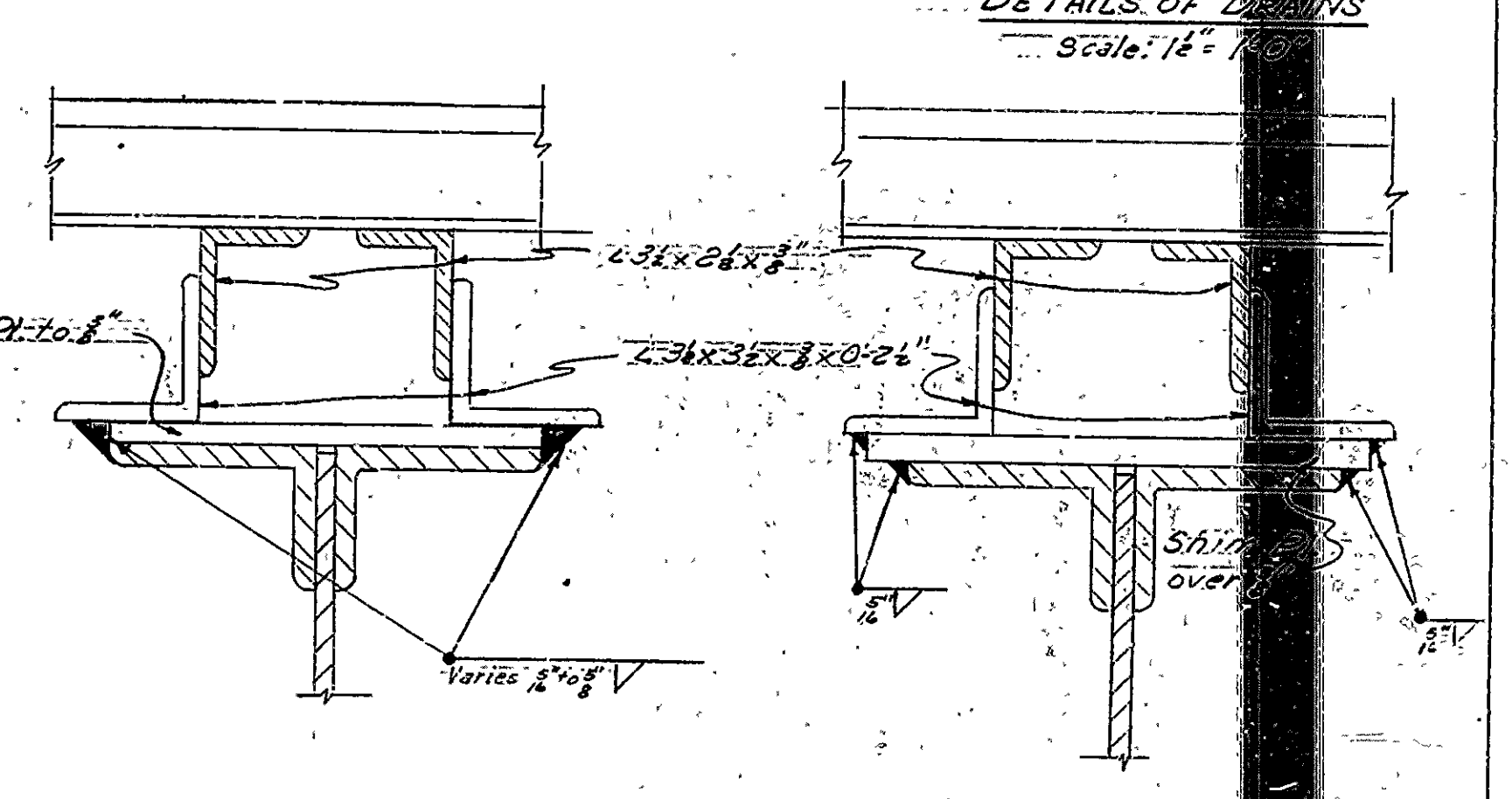
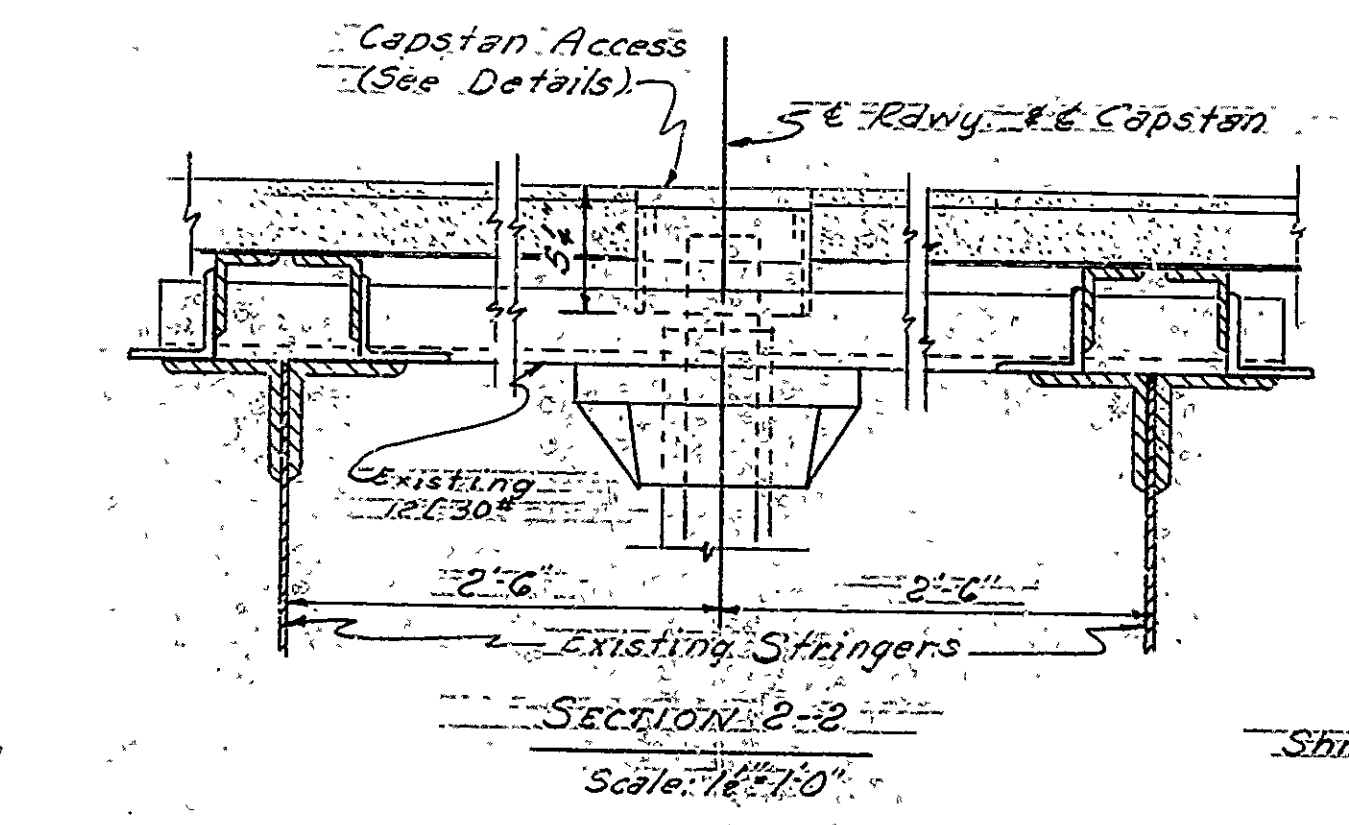
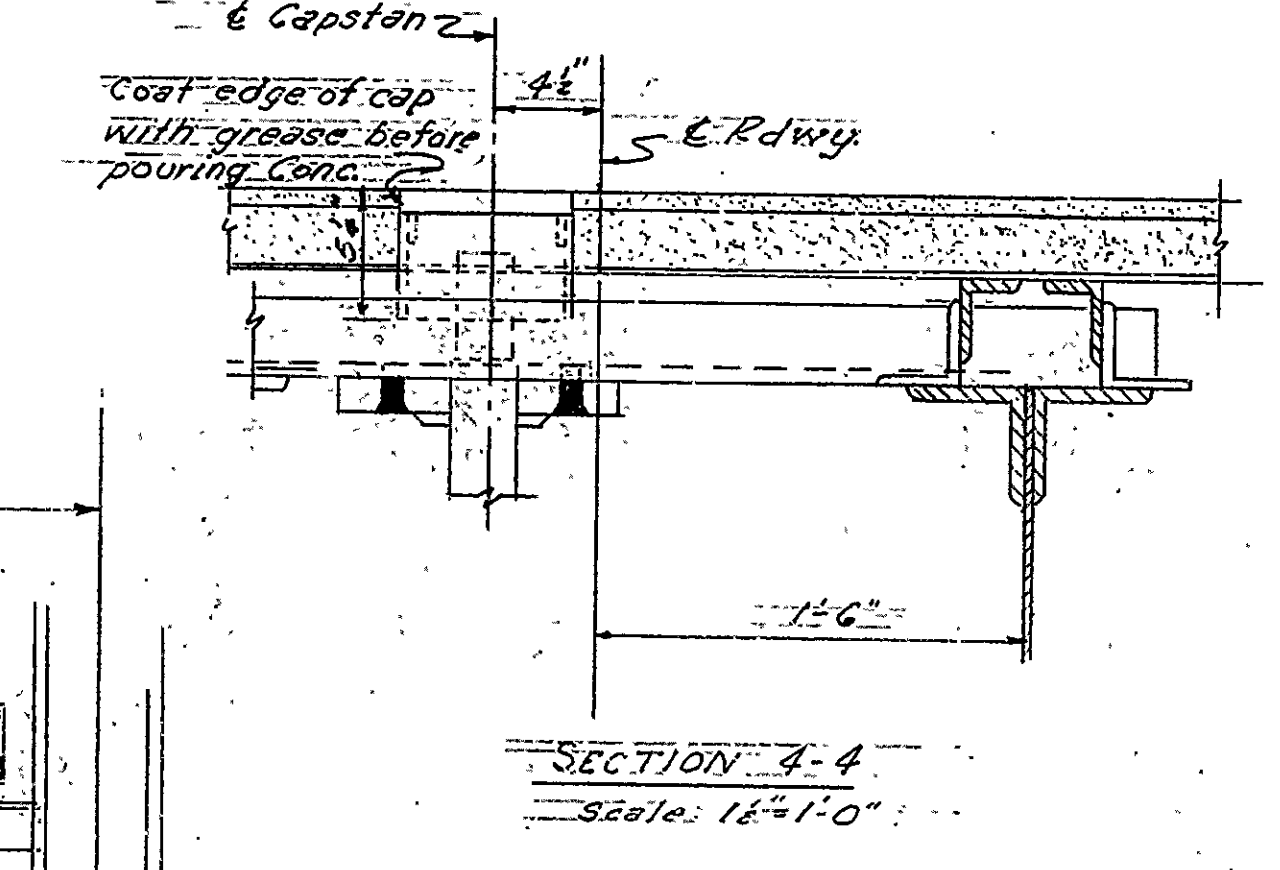
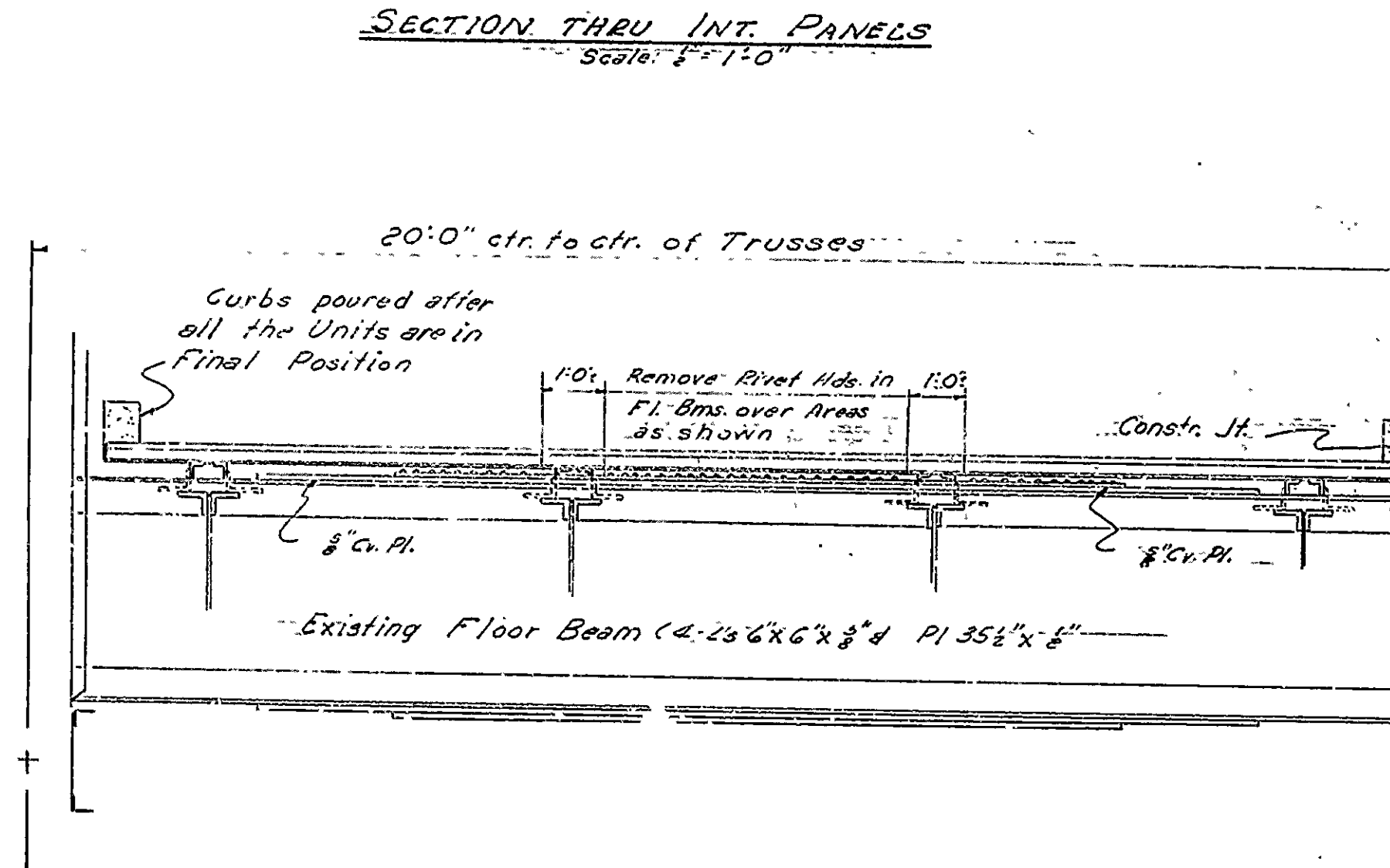
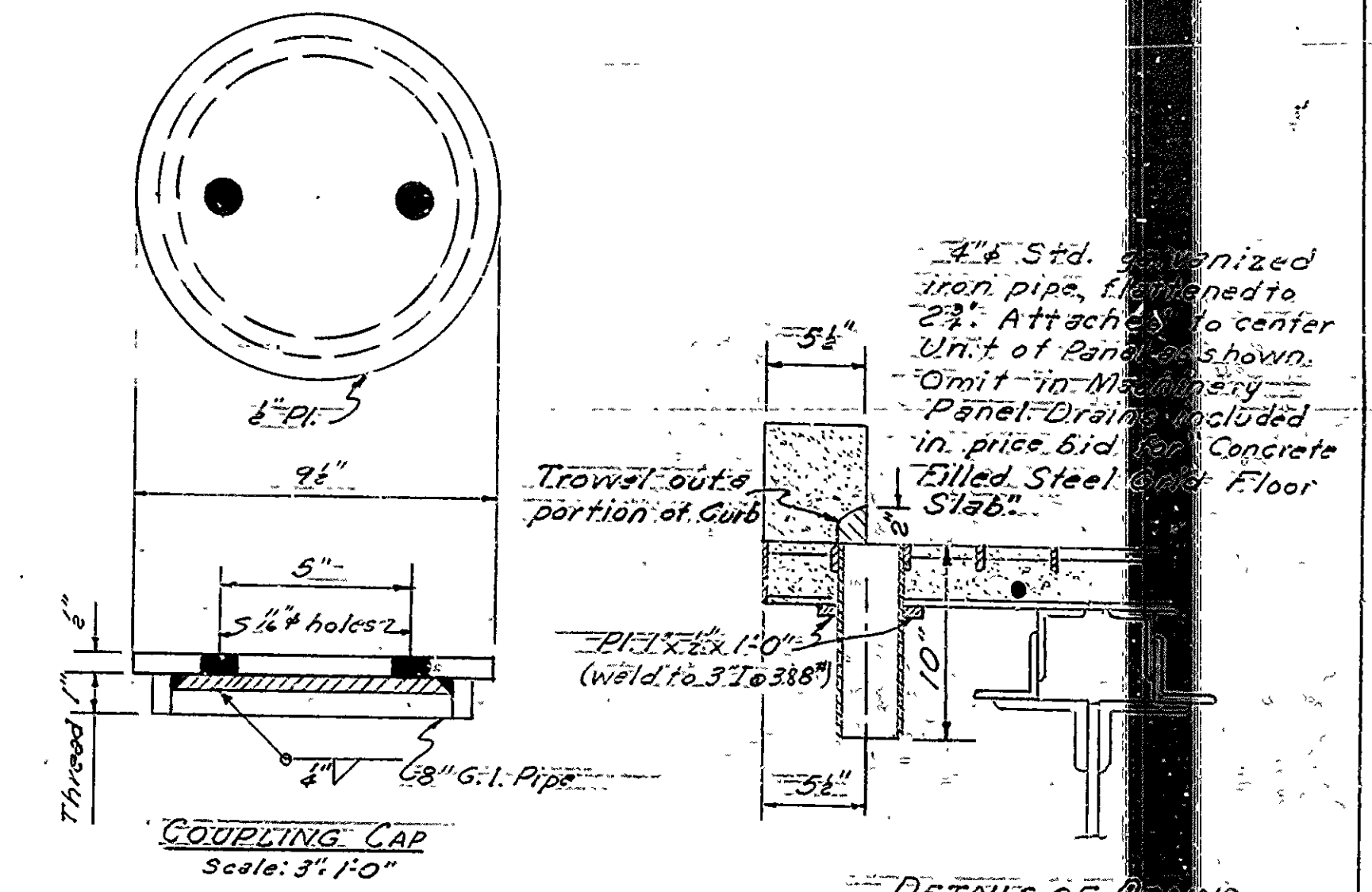
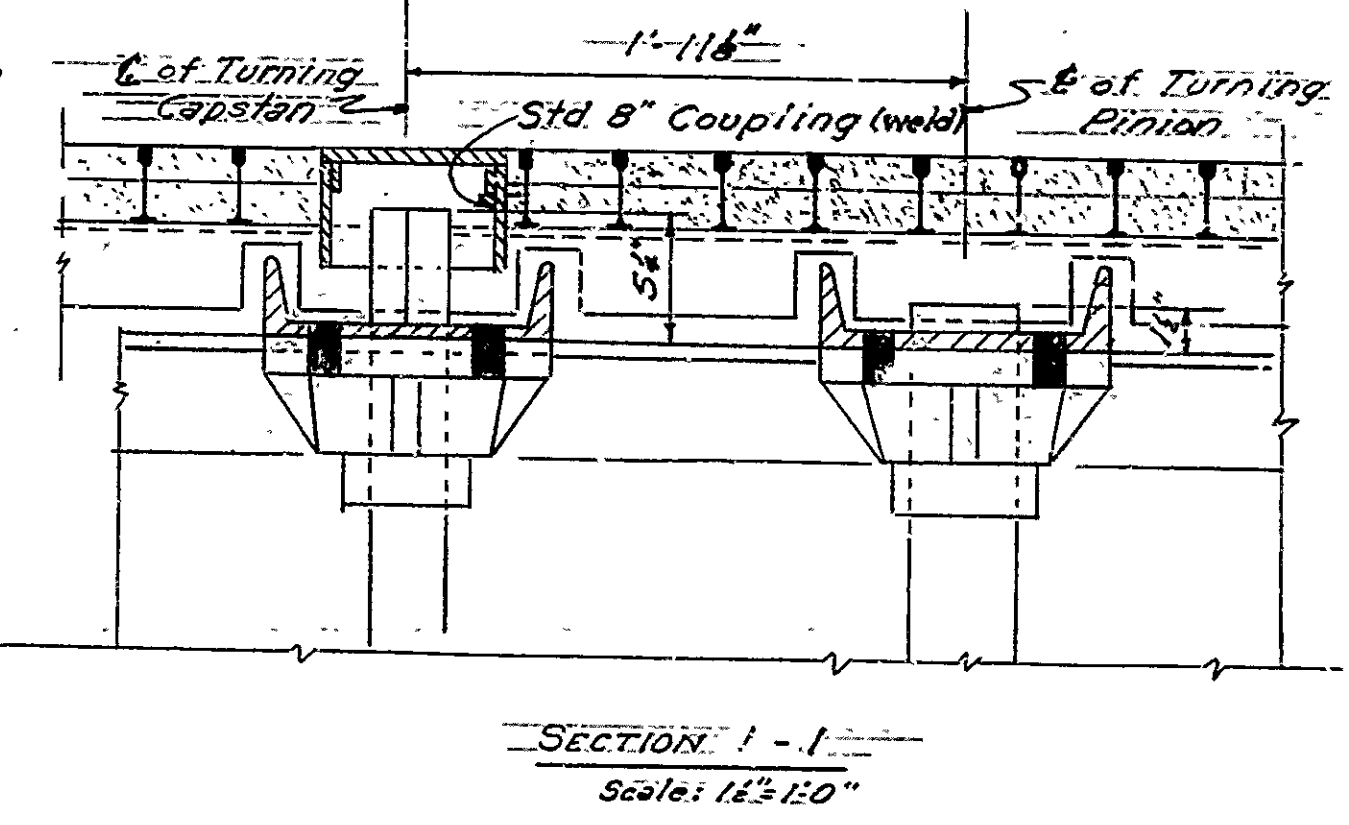
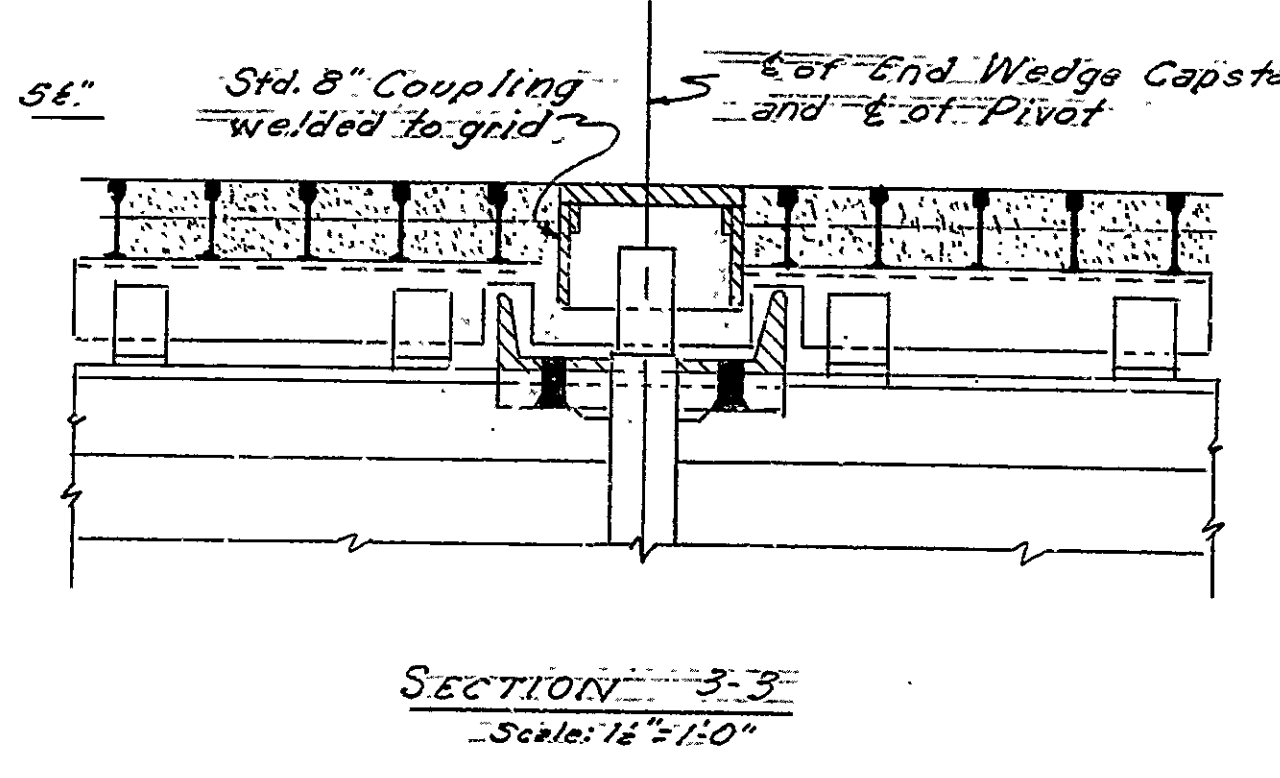
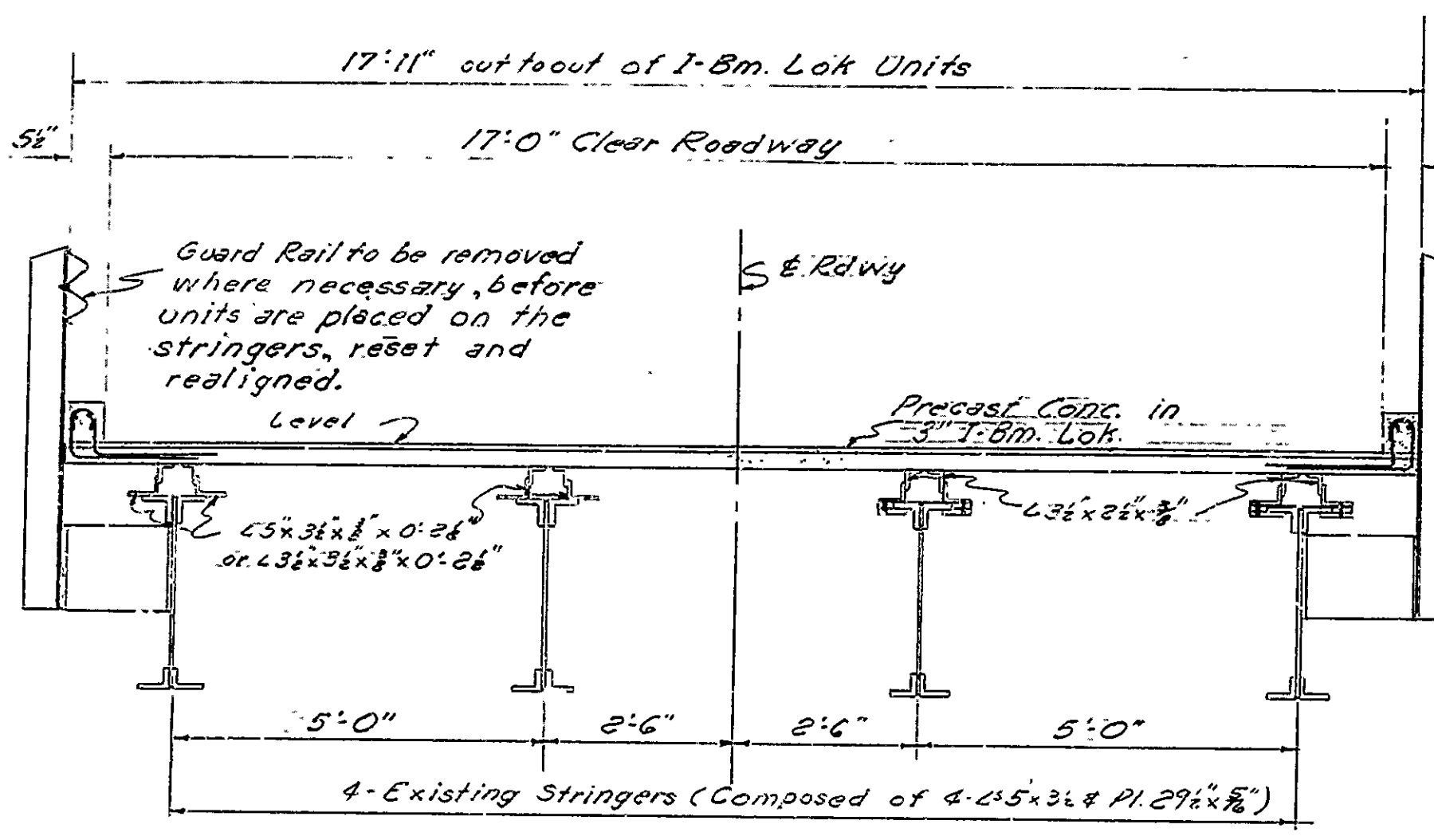


**DETAILS OF
REFLOORING SWING SPAN
ARKANSAS RIVER-MORRILTON
CONWAY COUNTY
ROUTE 9 SEC. 7
ARKANSAS STATE HIGHWAY COMMISSION
LITTLE ROCK, ARK.**

Drawn By: F.R.B. Date: 1-25-55
 Traced By: _____ Date: _____
 Checked By: J.M.K. Date: 1-27-55
 BRIDGE NO. 692 DRAWING NO. 7180

Scale: as noted

L.P. Carlson
 Bridge Design Engineer



DETAILS OF SHIM WELDING*
Scale: 3/4"=1'-0"

Note:
*After all intermediate 2s have been welded the bolts & plates are removed. Fastener bolts are then welded to stringer flange.
*Where shim-Pl. are not needed, clip 2s are welded to stringer flanges with 5/16" fillet weld.

LOADING: H-20, A.A.S.H.O. 1953
UNIT STRESSES:
Class "S" Conc. (n=10) 1,200 #/sq. in.
Reinforcing Steel 20,000 #/sq. in.
Structural Steel 18,000 #/sq. in.

DETAILS OF REFLOORING SWING SPAN
ARKANSAS RIVER-MORRILTON
CONWAY COUNTY
ROUTE 9 SEC. 7
ARKANSAS STATE HIGHWAY COMMISSION
LITTLE ROCK, ARK.

Drawn By: FRB Date: 1-25-55
Traced By: Date: _____
Checked By: GML Date: 1-31-55
BRIDGE NO. 692 DRAWING NO. 7180-B

L. O. Carlson
Bridge Design Engineer